



22 Dorman Crescent Lindfield, NSW

5

3

2

Modern family-size proportions all meticulously maintained

Delivering an outstanding level of space and comfort, this c.2009 entertainer is designed to capture abundant natural light while offering exceptional privacy and tranquility. Presented on a 973sqm approx. landscaped parcel with the 400sqm approx. layout set across two spectacular levels.

Price:

Contact Agent



Steven Kourdis

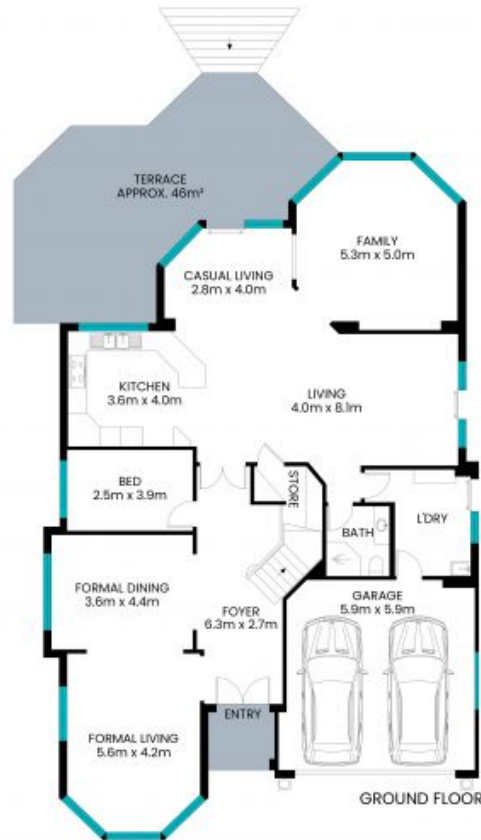
0402 555 675



Patrick Haddad

0466 621 421

22 Dorman Crescent
Lindfield



Internal & Balcony area: 355m²
Terrace area: 53m²
Total area: 408m²

The site plan and floor plan are not to scale; measurements are indicative and in meters. Bushes and trees are placed for illustration purposes. Plans should not be relied on. Interested parties should make and rely on their own enquiries. All other information provided has been collected from reliable sources but cannot be guaranteed for accuracy.