



68 Murray Farm Road Beecroft, NSW



Timeless Family Home with Captivating Appeal

Gracefully situated on a 666.6sqm lot, this charming family home benefits from a north-facing rear, bathing the stunning pool area in abundant natural light. Ready for immediate enjoyment yet offering potential for future enhancements, it sets the stage for a blissful family life, just steps from buses and within the zones for Roselea Public, Cheltenham Girls, and Carlingford High.

Price: Contact Agent
Council Rates: \$531.70 p/q
Water Rates: \$171.41 p/q



Kevin Dearlove

0403 338 302

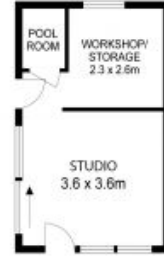
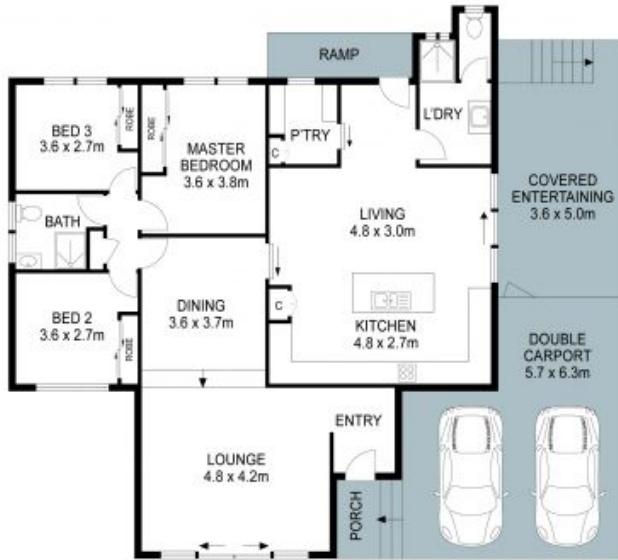


Leo Li

0404 917 188

68 Murray Farm Road, Beecroft

3 2 2 207.6m² 666.6m²



THIS IS AN ARTIST'S IMPRESSION - ALL DIMENSIONS, LAYOUTS AND TREES ARE APPROXIMATE
ALL INTERESTED PARTIES SHOULD MAKE AND RELY ON THEIR OWN ENQUIRIES

