



928/15 Bowes Street Phillip, ACT

1 1 1

Grand Central Towers

Beautifully designed to maximise space, capture natural light, and offer an easy-care lifestyle, this apartment is perfect for modern living. Choose between cooking at home or exploring the numerous local restaurants and cafes at your doorstep.

Price: \$450 per week

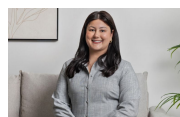
Bond: \$1,880

Available Date: 14/08/2024



Kerry Robinson

6253 8220



Courtney Saddi

6253 8220



Sizes And Dimensions Are Approximate, Actuals May Vary.