



4.309/18 Hannah Street Beecroft, NSW

1 1 1

### Stylish Apartment in 'Beecroft Place'

Superb easy-living space that's stylishly appointed for modern living, this designer one-bedroom apartment has a walk to everywhere position, just 100m to the train station. It complements the modern busy lifestyle and is ideal for buyers seeking secure, low-maintenance living in an exclusive location in the catchment for Beecroft Public, Cheltenham Girls and Carlingford High.

**Price:** Auction Guide \$640,000  
**Water Rates:** \$172.00 p/q  
**Strata Rates:** \$1,220.00 p/q



**Jeff Jianfu Luo**

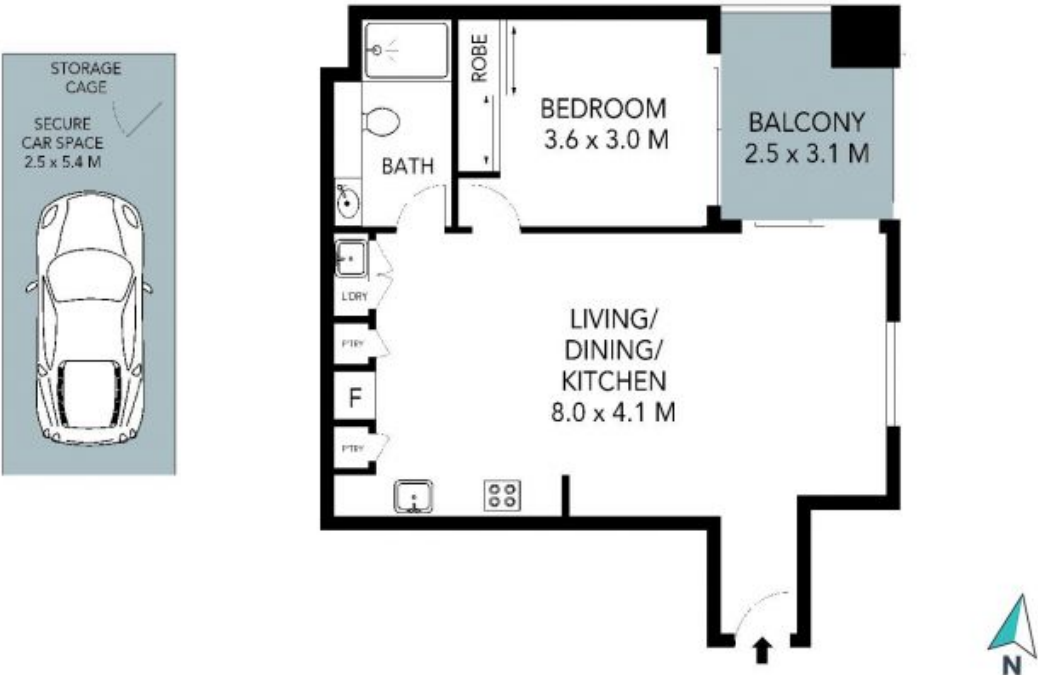
0425 286 668



**Wenjie Luo**

0433 971 007

4.309/18 Hannah Street,  
Beecroft



The site plan and floor plan are not to scale; measurements are indicative and in metres. Bushes and trees are placed for illustration purposes. Plans should not be relied on. Interested parties should make and rely on their own enquiries. All other information provided has been collected from reliable sources but cannot be guaranteed for accuracy.