

190 Shaftsbury Road Eastwood, NSW



Sold Oct 2024 - Contact James 0420 665 913

Ideal for a dream-maker's transformation, this single-level brick classic presents exceptional renovation and redevelopment potential (STCA). Nestled on a generous 663.9sqm parcel of land, its brilliant location provides an unsurpassed context for family living, mere steps away from highly-sought-after schools and universities, Eastwood's bustling village, and its impressive train station and bus network.

Price: Auction on-site Saturday 31st August at
Council Rates: ~~\$30,000~~ p/q
Water Rates: \$173.29 p/q



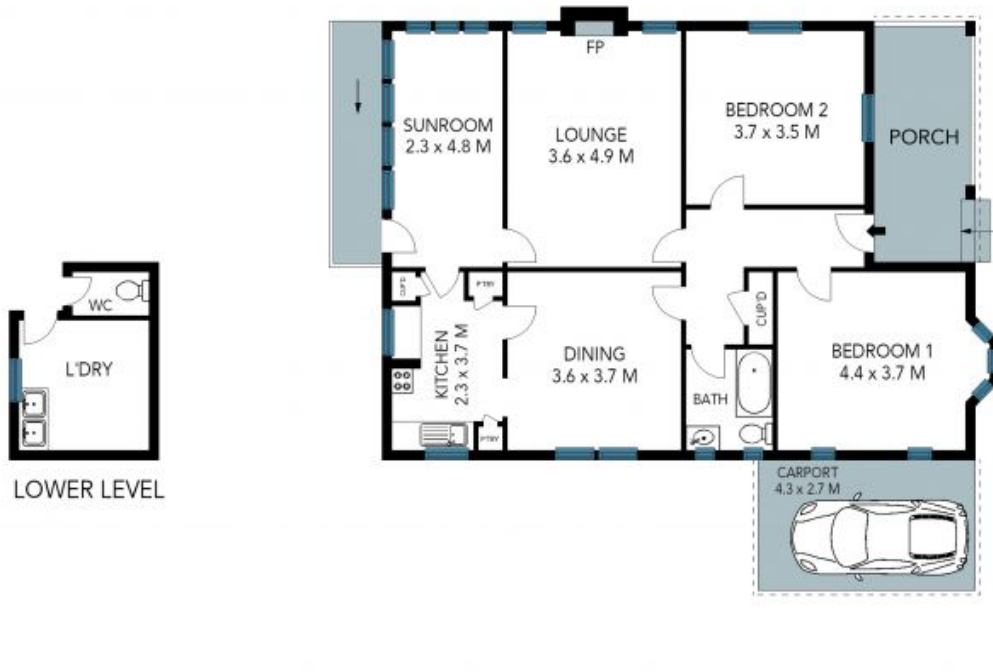
Chloe Mawass

0431 983 240



Jessica Zhou

0412 733 135



The site plan and floor plan are not to scale; measurements are indicative and in metres. Bushes and trees are placed for illustration purposes. Plans should not be relied on. Interested parties should make and rely on their own enquiries. All other information provided has been collected from reliable sources but cannot be guaranteed for accuracy.