



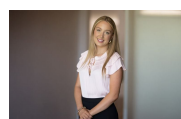
14/545 Pacific Highway St Leonards, NSW



### Walk-to-everything apartment in bustling St Leonards

Located in the bustling heart of St Leonards, amongst cafes, restaurants and shops, this stylish 1-bedroom apartment offers an inner-city lifestyle ideal for first homeowners or investors. With house-like proportions, and an over-sized entertaining balcony, enjoy walk-to-everything convenience, footsteps from the new metro, train and buses, and in Anzac Park Public and Cammeraygal High School zone.

**Price:** Contact Agent  
**Council Rates:** \$303.00 p/q  
**Water Rates:** \$178.00 p/q  
**Strata Rates:** \$1,143.05 p/q



**Claudia Conroy**

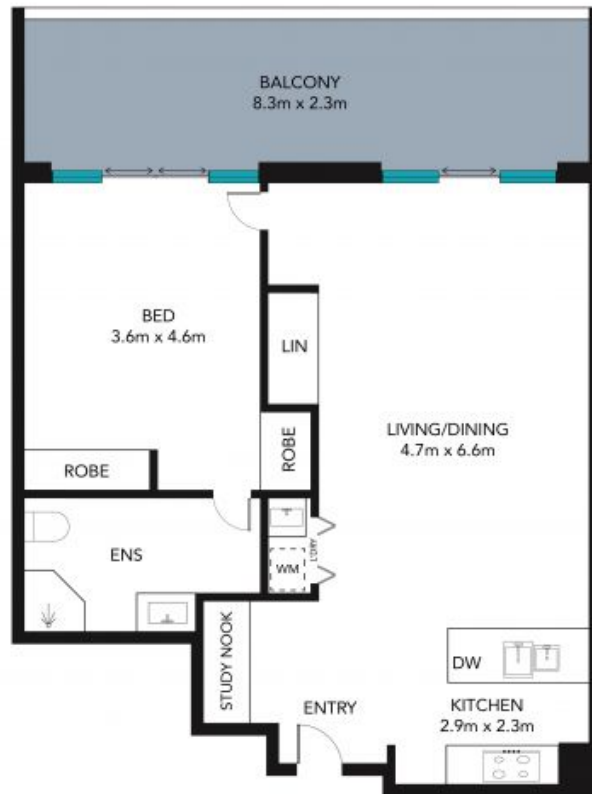
0449 945 358



**Max Ma**

0468 398 868

14/545 Pacific Hwy,  
Street Leonards



The site plan and floor plan are not to scale; measurements are indicative and in meters. Bushes and trees are placed for illustration purposes. Plans should not be relied on. Interested parties should make and rely on their own enquire. All other information provided has been collected from reliable sources but cannot be guaranteed for accuracy.