



404/38-42 Chamberlain Street Campbelltown, NSW

2 2 1

### Spacious and sunny 4th floor apartment

Discover the perfect blend of comfort and convenience in this charming north-east facing apartment, located on the 4th floor of a modern building.

**Price:** \$530,000 - \$560,000

**Council Rates:** \$301.00 p/q

**Strata Rates:** \$1,036.25 p/q



**Michelle Balabka**

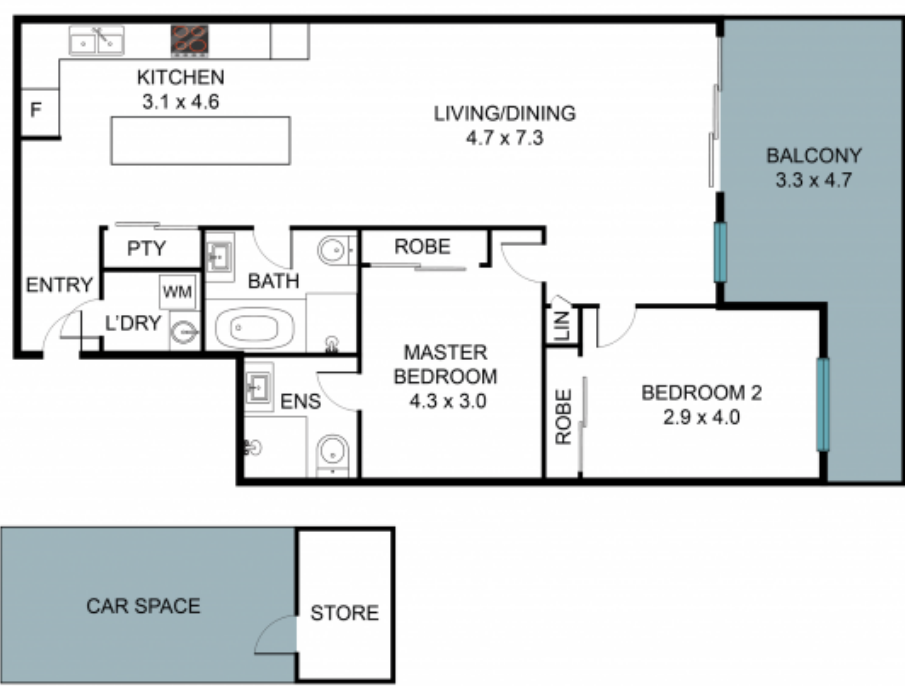
0419 473 253



**Russell Wyer**

0414 867 707

**STONE**



**404/38-42 Chamberlain St, Campbelltown NSW 2560**



The floor plan is not to scale, measurements and in metres. Exterior elements are not in position.  
Plans should not be relied on. Interested parties should make and rely on their own enquiries.  
All other information provided has been collected from reliable sources but cannot be guaranteed for accuracy.