

13 Alan Avenue Seaforth, NSW

4 

2 

2 

Exquisite northerly entertainer set in prestigious Seaforth enclave

Price: Contact Agent  
Council Rates: \$805.00 p/q



**Maria Cassarino**

0411 818 093



**Lauren Sudol**

0438 138 675

13 Alan Ave  
Seaforth



1st Level



STONE



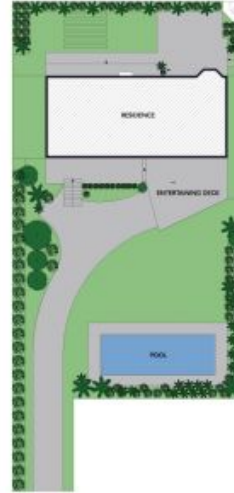
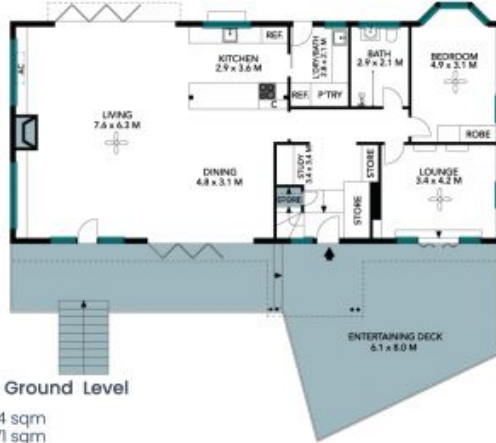
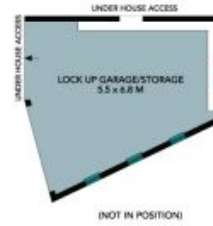
Ground Level

Internal Living: 244 sqm  
External Living: 71 sqm  
Total Living Area: 315 sqm



The floor plan is not to scale, measurements are indicative and in metres. All features included in this 3D plan are for inspiration purposes only. This is not an exact replica of the property or the position of exterior elements. Plans should not be relied on. Interested parties should make and rely on their own enquiries.

13 Alan Ave  
Seaforth



Internal Living: 244 sqm  
External Living: 71 sqm  
Total Living Area: 315 sqm



The site plan and floor plan are not to scale; measurements are indicative and in metres. Bushes and trees are placed for illustration purposes. Plans should not be relied on. Interested parties should make and rely on their own enquiries. All other information provided has been collected from reliable sources but cannot be guaranteed for accuracy.