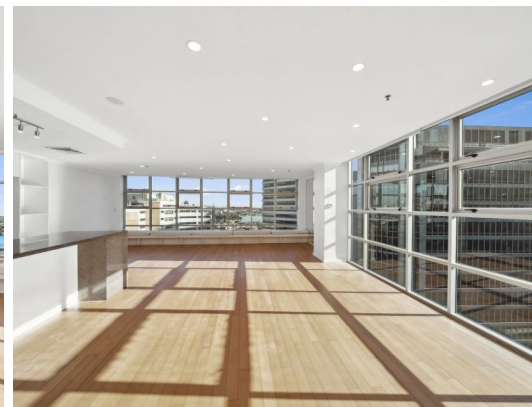


Actual View



1601/93 Pacific Highway North Sydney, NSW

3 3 2

### Legendary Harbour Bridge views from whole floor penthouse

Encompassing the entire top floor of the La Maison building this is an opportunity to live your urban dream. Here, North Sydney lies waiting at your door with its finger on the pulse of business and leisure while providing easy transport just moments away. Luxuriously appointed bathrooms offer ensuites to all three bedrooms. Two secure car spaces deliver rare on-site accommodation for vehicles. This home and location will never fail to impress.

**Price:** Deposit Taken  
**Bond:** \$6,800  
**Available Date:** 24/08/2024



**Natasha Amos**

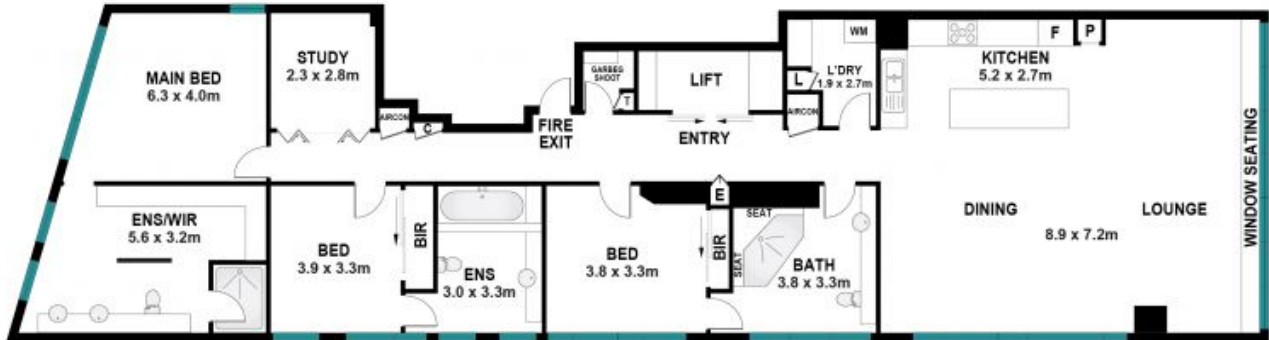
0415 755 587



**Stephanie Ryan**

0451 307 760

1601/93 Pacific Highway,  
North Sydney



The site plan and floor plan are not to scale; measurements are indicative and in metres. Bushes and trees are placed for illustration purposes. Plans should not be relied on. Interested parties should make and rely on their own enquiries. All other information provided has been collected from reliable sources but cannot be guaranteed for accuracy.