



4/12-18 Russell Avenue Lindfield, NSW



Boutique townhouse in a prestigious walk-to-rail village setting

Price: Sold \$2,585,000
Council Rates: \$412.50 p/q
Water Rates: \$175.96 p/q
Strata Rates: \$825.02 p/q



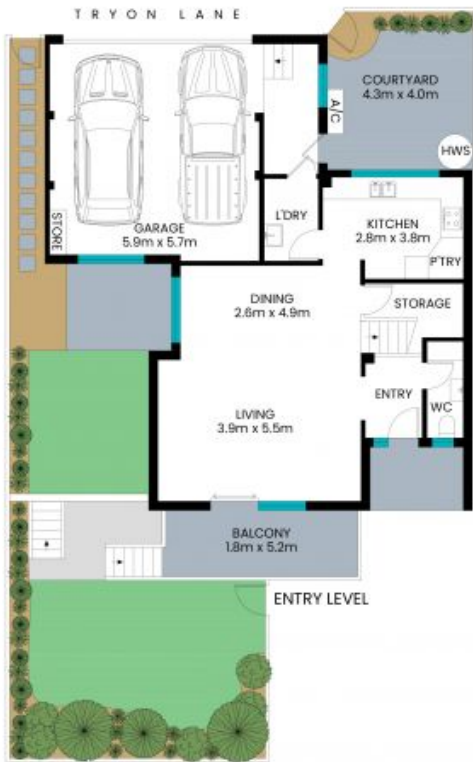
Matt Payne

0435 825 242



Patrick Haddad

0466 621 421



Internal area: 164m²
External area: 113m²
Total area(approx.): 277m²

The site plan and floor plan are not to scale; measurements are indicative and in meters. Bushes and trees are placed for illustration purposes. Plans should not be relied on. Interested parties should make and rely on their own enquiries. All other information provided has been collected from reliable sources but cannot be guaranteed for accuracy.