



8/27 River Road Wollstonecraft, NSW 2 1 1

SOLD PRIOR TO AUCTION BY DAVID HILL PROPERTY TEAM

Sleek apartment, quiet rear setting, super central
Hushed away at the rear of a boutique security building of nine, this impressive apartment provides an urban oasis of tranquillity and calm in a super-central lifestyle address. Bright, spacious and updated with stylish contemporary finishes, it opens to an oversized covered balcony with private leafy outlooks. Step out the door to a park across the road or stroll around five minutes to Crows Nest's new metro station and sizzling dining scene, shopping and rail at St Leonards or Wollstonecraft Station.

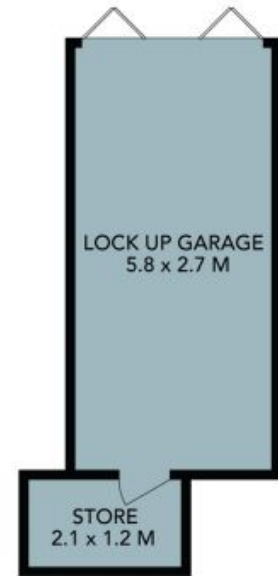
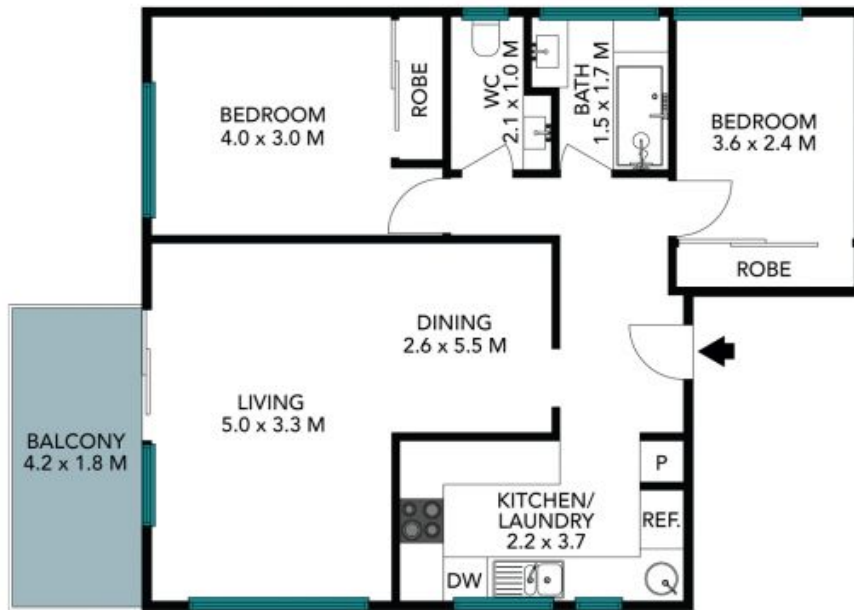
Council Rates: \$307.00 p/q
Water Rates: \$172.00 p/q
Strata Rates: \$1,199.00 p/q



David Hill
0411 491 122



Ruby Johnson
0432 869 227



(NOT IN POSITION)



The floor plan is not to scale, measurements are indicative and in metres. Labels elements are not in position. Plans should not be relied on. Interested parties should make and rely on their own enquiries. All other information provided has been collected from reliable sources but cannot be guaranteed for accuracy.

8/27 River Road
Wollstonecraft

STONE



The floor plan is not to scale; measurements are indicative and in metres. All features included in this 3D plan are for inspiration purposes only. This is not an exact replica of the property or the position of exterior elements. Plans should not be relied on. Interested parties should make and rely on their own enquiries.