

50 Gloucester Road Epping, NSW



Family Oasis with Spectacular Bushland Views

Nestled on an expansive 1,113sqm, this magnificent family haven offers a splendid outlook and effortless flow to the outdoors, ideal for carefree entertaining with a balcony overlooking the pool. With enviable charm, warmth, and timeless elegance, it's a private sanctuary and an unforgettable family setting, zoned for Epping Public, Cheltenham Girls, Epping Boys, and Carlingford High.

Price:

Contact Agent



Kevin Dearlove

0403 338 302



Danny Jing

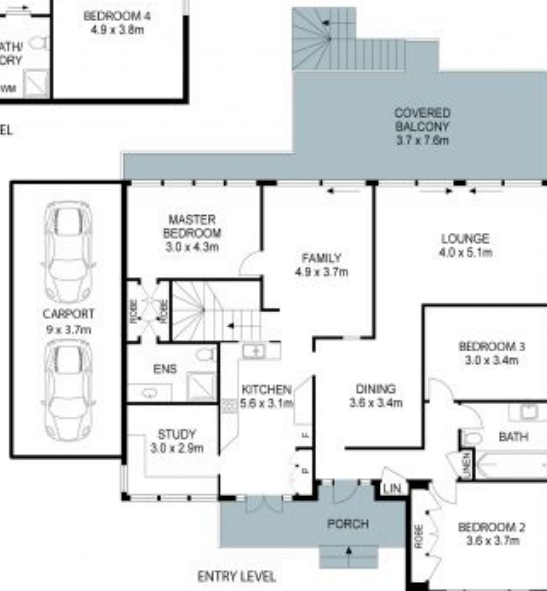
0430 025 586

50 Gloucester Road, Epping

4 3 2 1113m²



GROUND LEVEL



ENTRY LEVEL



THIS IS AN ARTIST'S IMPRESSION - ALL DIMENSIONS, LAYOUTS AND TREES ARE APPROXIMATE
ALL INTERESTED PARTIES SHOULD MAKE AND RELY ON THEIR OWN ENQUIRIES

