



26/75 Elizabeth Jolley Crescent Franklin, ACT



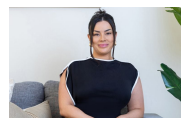
North-facing one bedroom apartment only metres from light rail

Embrace a lifestyle of effortless comfort and convenience in this bright apartment, located in the lively Franklin area of Northern Canberra.

Price: \$440 per week

Bond: \$1,840

Available Date: 30/08/2024



Tahlia Dal Broi

6253 8220



Jess Campbell

6253 8220



Ground Floor



The site plan and floor plan are not to scale; measurements are indicative and in metres. Bushes and trees are placed for illustration purposes. Plans should not be relied on. Interested parties should make and rely on their own enquiries. All other information provided has been collected from reliable sources but cannot be guaranteed for accuracy.

26/75 Elizabeth Jolley Crescent  
Franklin



The floor plan is not to scale; measurements are indicative and in metres. All features included in this 3D plan are for inspiration purposes only. This is not an exact replica of the property or the position of exterior elements. Plans should not be relied on, interested parties should make and rely on their own enquiries.