



9/2 Jefferson Court Upper Coomera, QLD

3 2 1

UNDER CONTRACT!

Discover the perfect blend of comfort, convenience, and community living with this beautifully maintained townhouse in Jefferson Court. Nestled in a sought-after complex with a pool, this property offers a prime location with easy access to Westfield Shopping Centre, St Stephens Private School, and a range of other esteemed private and public schools. Public transport is also just a short distance away.

Price: \$700,000



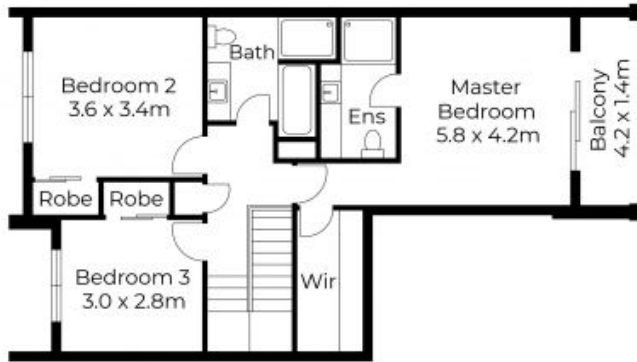
Shane Evans

0416 193 663



Temo Colosimo

0407 649 356



First Floor



Ground Floor



Floor plans and site plans are for illustrative purposes only. They are not part of any legal document or title and are subject to errors, omission, and inaccuracies. Whilst every attempt has been made to ensure the accuracy of this plan, measurements of doors, windows, rooms, cupboards etc are approximate only.

APPROXIMATE AREA
LIVING AREA : 140m²
TOTAL AREA : 193m²



Ground Level

First Level



Floor plans and site plans are for illustrative purposes only. They are not part of any legal document or title and are subject to errors, omission, and inaccuracies. Whilst every attempt has been made to ensure the accuracy of this plan, measurements of doors, windows, rooms, cupboards etc are approximate only.

APPROXIMATE AREA
LIVING AREA : 226 m²
TOTAL AREA : 244 m²