

27 Avon Road Pymble, NSW

5 3 2

### Renovated walk rail stunner, self contained studio

Contemporary renovations, with clean lines and neutral tones, creates modern appeal for families in this stylish northerly to rear home. The single level layout showcases spacious interiors with multiple living and dining areas, a family-sized kitchen, and a separate self-contained studio ideal for in-laws or young adults. Walk to rail, and footsteps to Pymble Ladies College.

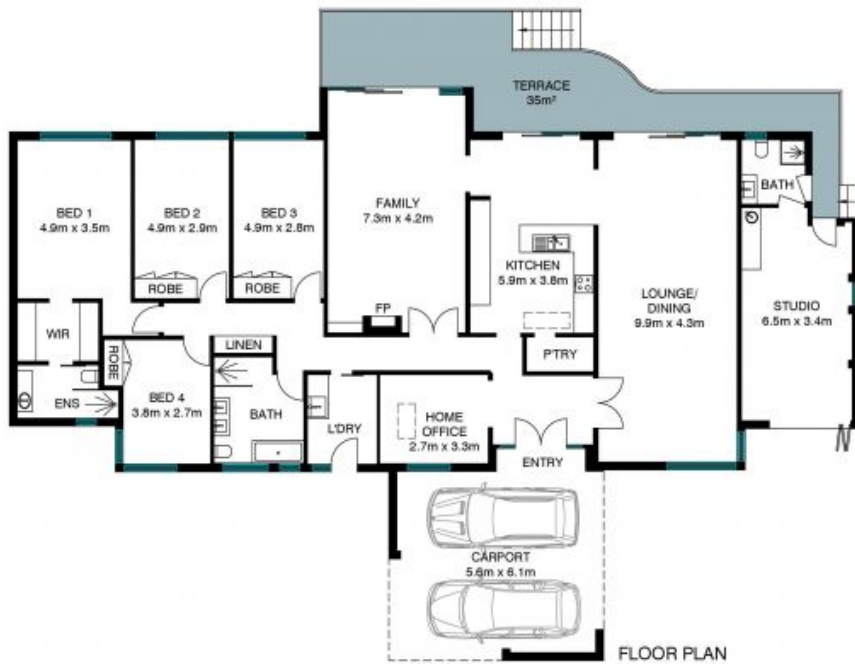
**Council Rates:** \$2,164.00/year (approx)

**Water Rates:** \$1,260.00/year (approx)



**Susan Astridge**

0418 104 540



FLOOR PLAN



SITE PLAN  
NOT TO SCALE

Internal area: 245m<sup>2</sup>  
 Carport area: 38m<sup>2</sup>  
 Terrace area: 35m<sup>2</sup>  
 Total area: 318m<sup>2</sup>

The site plan and floor plan are not to scale; measurements are indicative and in metres. Bushes and trees are placed for illustrative purposes. Plans should not be relied on. Interested parties should make and rely on their own enquiries. All other information provided has been collected from reliable sources but cannot be guaranteed for accuracy.

27 Avon Road, Pymble

