



13/25-27A Wongala Crescent Beecroft, NSW 2 2 1

Two bedroom + study apartment in Beecroft Primary catchment

For inspections, enter from Chapman Ave

Price: Sold by Kevin Dearlove
Council Rates: \$391.05 p/q
Water Rates: \$172.79 p/q
Strata Rates: \$1,378.75 p/q



Jeff Jianfu Luo
0425 286 668

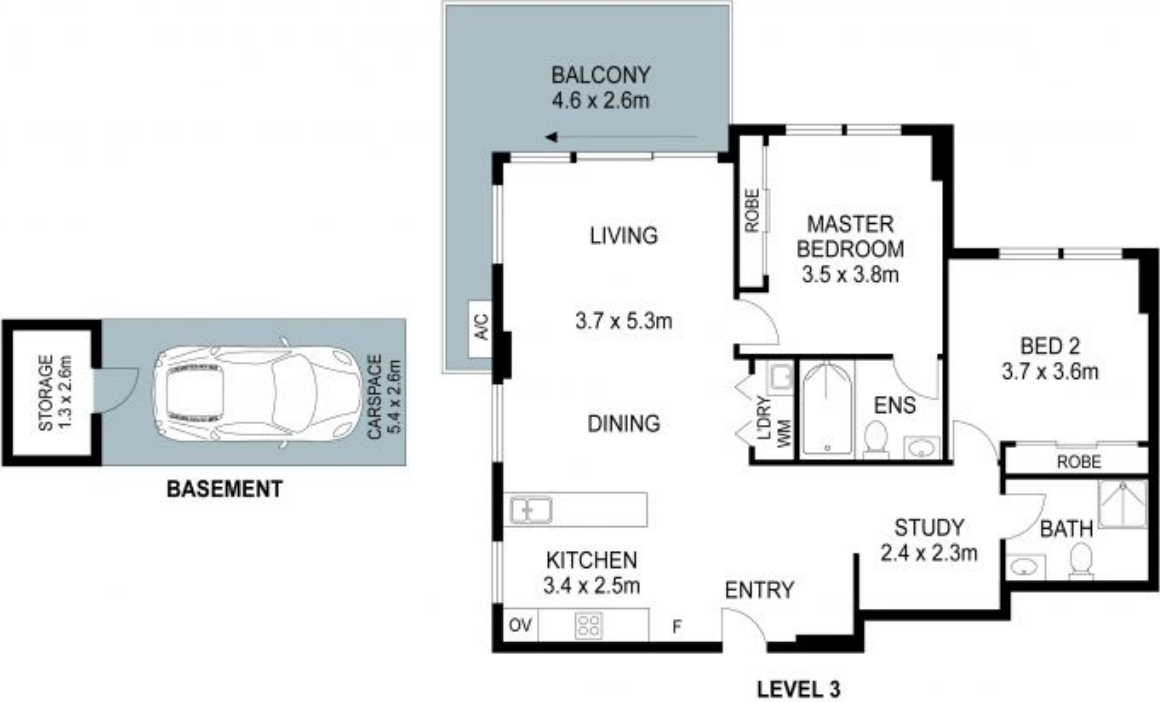


Kevin Dearlove
0403 338 302

13/25-27 Wongala Crescent, Beecroft



2 Beds 2 Bathrooms 1 Car 1 Stair



THIS IS AN ARTIST'S IMPRESSION - ALL DIMENSIONS, LAYOUTS AND TREES ARE APPROXIMATE
ALL INTERESTED PARTIES SHOULD MAKE AND RELY ON THEIR OWN ENQUIRIES

