



205/2C Munderah Street Wahroonga, NSW



Stylish ground floor apartment in tightly-held 'Lexington' development



Susan Astridge

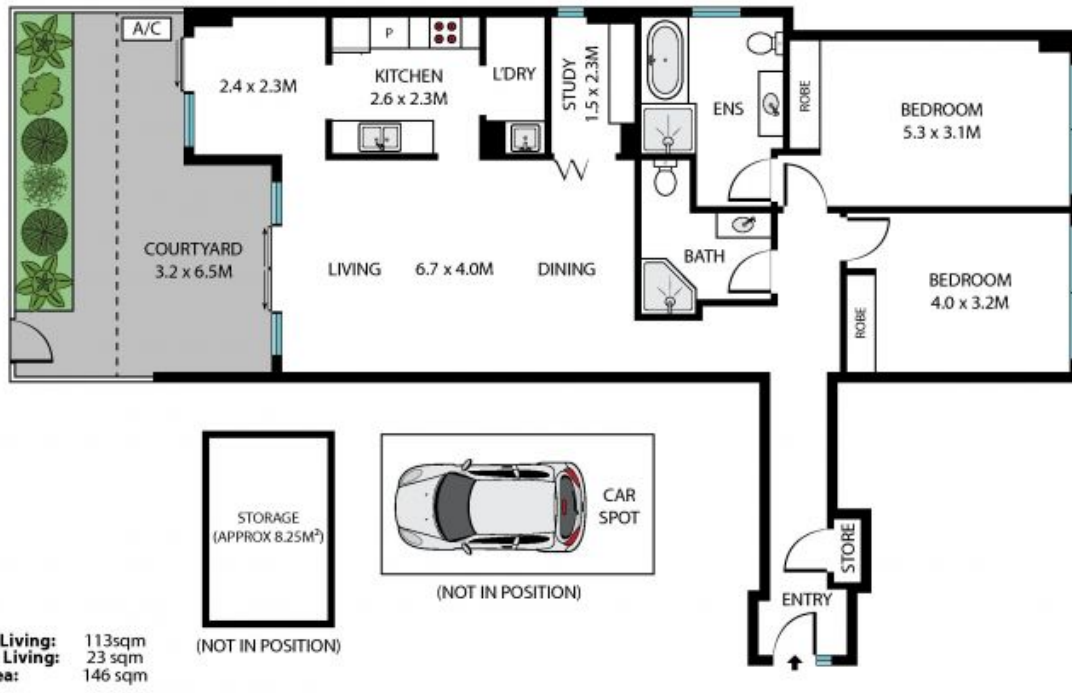
0418 104 540



Joey Hoover

0424 487 439

205/2c Munderah Street
Wahroonga



Internal Living: 113sqm
External Living: 23 sqm
Total Area: 146 sqm



The site plan and floor plan are not to scale; measurements are indicative and in metres. Bushes and trees are placed for illustration purposes. Plans should not be relied on. Interested parties should make and rely on their own enquiries. All other information provided has been collected from reliable sources but cannot be guaranteed for accuracy.