



10 Samuel Street Bligh Park, NSW

4 1 2

Where memories are made.

Positioned on a 448 square metre parcel of land with a drive through tandem carport this 4 bedroom family home is priced right for the young growing family looking to get into the market.

Price: \$875,000



Adam Buchert

0488 717 184



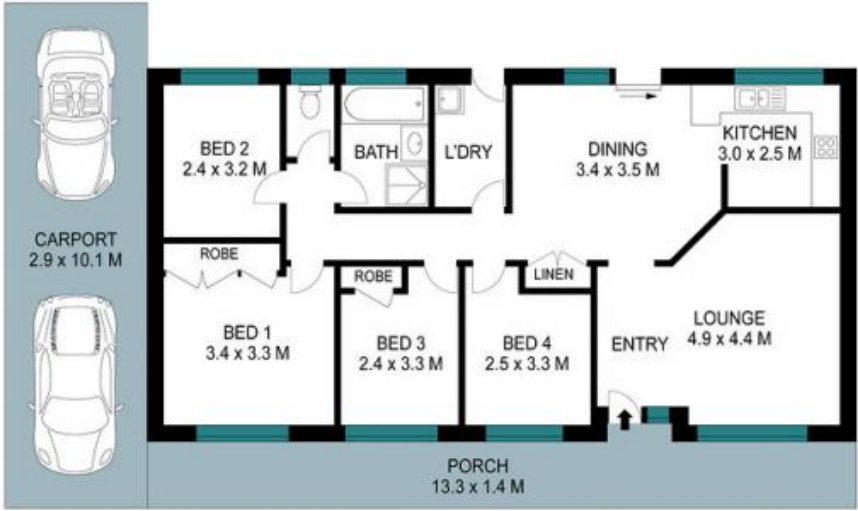
Briana McDonald

0428 106 432

10 Samuel Street
Bligh Park



GARDEN
SHED
2.1 x 1.7 M



WARNING: DISCLAIMER This information is not to be relied upon. It is strictly used for marketing and illustration purposes only. All measurements are approximate. Not to scale. No liability accepted. You must rely on your own inquiries and seek advice from your solicitor.