



81 Corinth Road Heathcote, NSW



### Expansive family living and sweeping bush views

Breathtaking National Park views and spacious interiors shine in this well-positioned family home. Featuring a generous family/rumpus room with space for a home office, plus a large upstairs main living with a relaxing balcony, it's versatility at its finest. An open plan dining and kitchen, plus an expansive outdoor entertaining area, make this the ideal entertainer and family-friendly abode.

**Price:** Contact agent

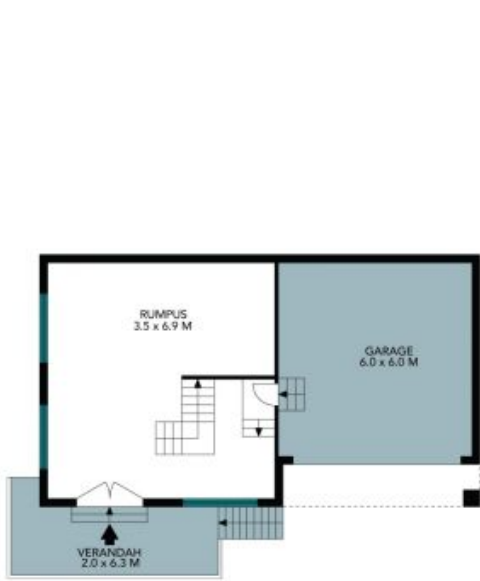
**Council Rates:** \$387.50 p/q

**Water Rates:** \$172.79 p/q



**Gerard Foote**

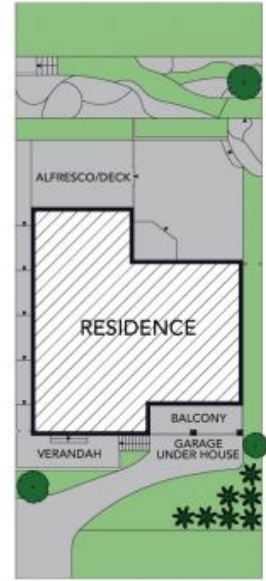
0433 421 333



Ground Floor



First Floor



Site Plan



The site plan and floor plan are not to scale; measurements are indicative and in metres. Bushes and trees are placed for illustration purposes. Plans should not be relied on. Interested parties should make and rely on their own enquiries. All other information provided has been collected from reliable sources but cannot be guaranteed for accuracy.

81 Corinth Road  
Heathcote



Ground Floor



First Floor



The floor plan is not to scale; measurements are indicative and in metres. All features included in this 3D plan are for inspiration purposes only. This is not an exact replica of the property or the position of exterior elements. Plans should not be relied on. Interested parties should make and rely on their own enquiries.