



10 Argyll Place Cheltenham, NSW



### Idyllic serenity

Located on the eastern side of Cheltenham oozing 1960's charm and 2020's appeal this little beauty is the ideal entry level home for those wanting to break into this esteemed locale. Pairing laidback comfort with modern versatility this practical single level home is move in ready and lends itself to many options for future gain.

**Price:** \$2,120,000  
**Council Rates:** \$657.20 p/q  
**Water Rates:** \$172.79 p/q



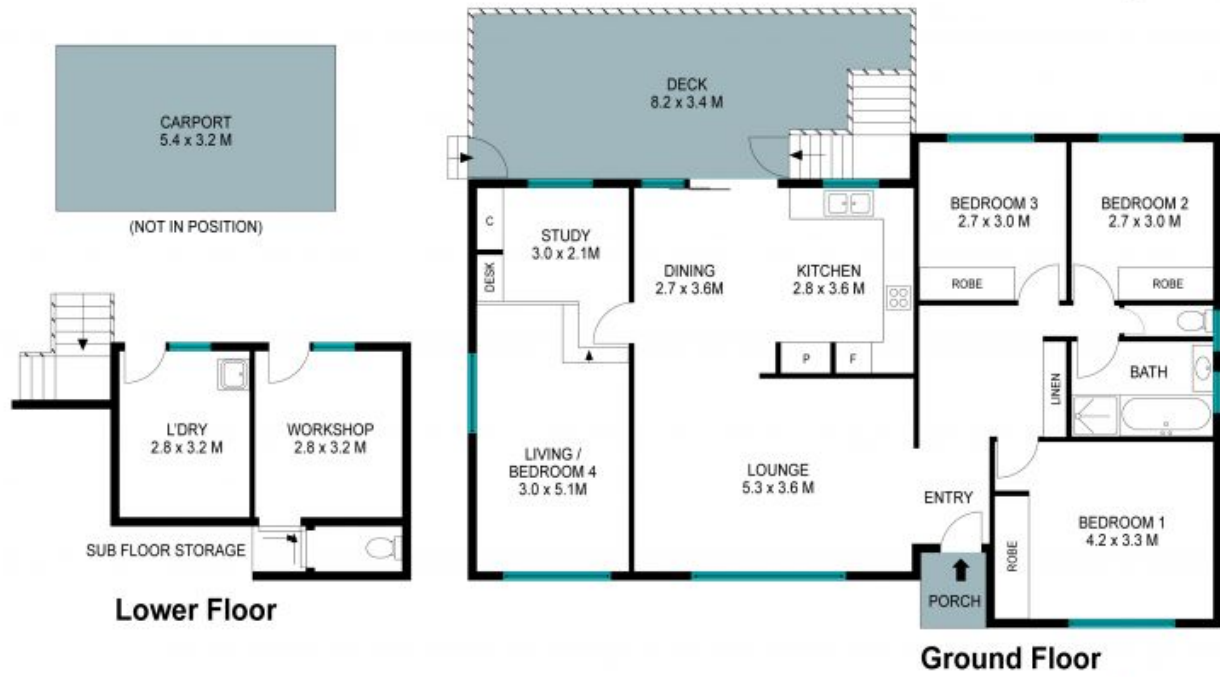
**Jane Booty**

0412 207 452



**Viviane Mylott**

0438 983 615



The site plan and floor plan are not to scale; measurements are indicative and in metres. Bushes and trees are placed for illustration purposes. Plans should not be relied on. Interested parties should make and rely on their own enquiries. All other information provided has been collected from reliable sources but cannot be guaranteed for accuracy.