



74 Plover Lane Verges Creek, NSW

4 1 6

Room to Roam ? 16.4 Ha (40Ac) with Country Home! - Minutes to Coastal Beaches!

Welcome to 74 Plover Lane, Verges Creek, where you'll be greeted by birds chirping, the trees swaying, ducks in the dams, and this freshly painted 4-bedroom farmhouse that is move-in ready!

Price: \$999,000
Council Rates: \$1,582.52/year (approx)



Josh Wicks

0448 637 509

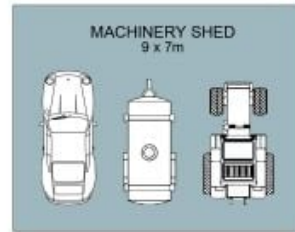
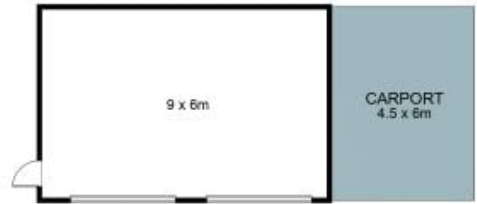
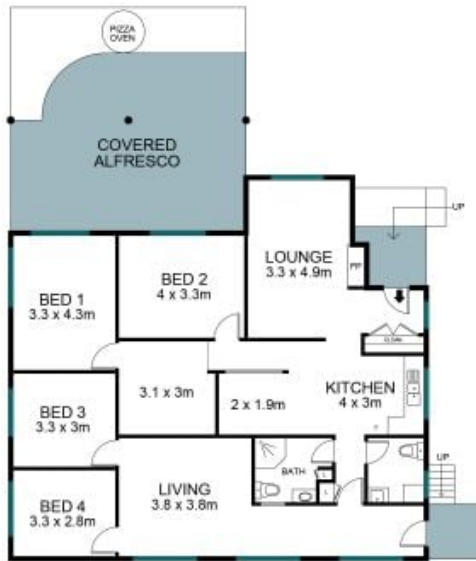


Braithan Lewis

0488 626 999

74 Plover Lane Verges Creek

STONE



The site plan and floor plan are not to scale; measurements are indicative in meters. Bushes and trees are placed for illustration purposes. Plans should not be relied on. Interested parties should make and rely on their own inquiries. All other information provided has been collected from reliable sources but cannot be guaranteed for accuracy.