



7/2 Gerard Street Cremorne, NSW

3 1 1

### Ultra Convenient Location & Northerly Aspect

Step into luxury living with this exquisite second level apartment located at the rear of the complex. Nestled in a prime corner spot, its outdoor terrace offers panoramic northerly district views, flooding the space with natural light and an enchanting ambiance. Impeccably renovated with a fresh white palette, this three-bedroom abode boasts optimal separation between living and sleeping quarters.

**Price:** \$900 pw  
**Available Date:** 25/10/2024



**Louise Lipovac**

0449 234 669

7/2-8 Gerard Street  
Cremorne

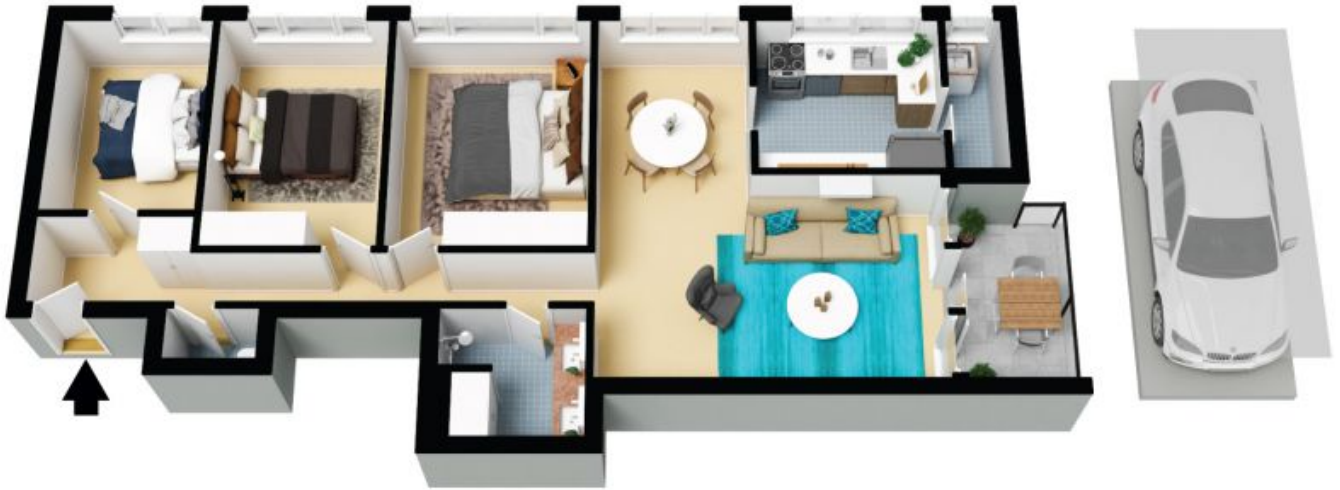


(NOT IN POSITION)



The floor plan is not to scale, measurements are indicative and in metres. Certain elements are not in position. Plans should not be relied on. Interested parties should make and rely on their own enquiries. All other information provided has been collected from reliable sources but cannot be guaranteed for accuracy.

7/2-8 Gerard Street  
Cremorne



The floor plan is not to scale; measurements are indicative and in metres. All features included in this 3D plan are for inspiration purposes only. This is not an exact replica of the property or the position of exterior elements. Plans should not be relied on. Interested parties should make and rely on their own enquiries.