

Level 23/36 Walker Street Rhodes, NSW

3 3 1

### Luxurious 3-Bedroom Apartment with Stunning Harbour Views in Rhodes Central

This spectacular brand new 3-bedroom PLUS study apartment offers direct views of the stunning Sydney Harbour and uninterrupted water vistas. Located in the heart of Rhodes Central, this new tower, developed by Billbergia, a 4.5 iCIRT-rated developer and builder, it features a vibrant lifestyle with retail outlets, fresh markets, laneway dining, and a state-of-the-art indoor recreation center, currently under construction, this iconic skyscraper is set to be completed in early 2025, standing as the tallest in the area.

- Three spacious bedrooms with built-in wardrobes and all with stunning water views
- Generous balcony and magnificent views from every window.
- Open-plan living and dining area with abundant natural light.
- Timber floor boards throughout lounge and hallway, carpet though the bedrooms and study.
- Contemporary kitchen with a stone island bench, premium stainless-steel appliances, and ample pantry space
- Three bathrooms and internal laundry
- Secure car space with a storage cage

**Price:** Deposit taken pw  
**Available Date:** 28/09/2024



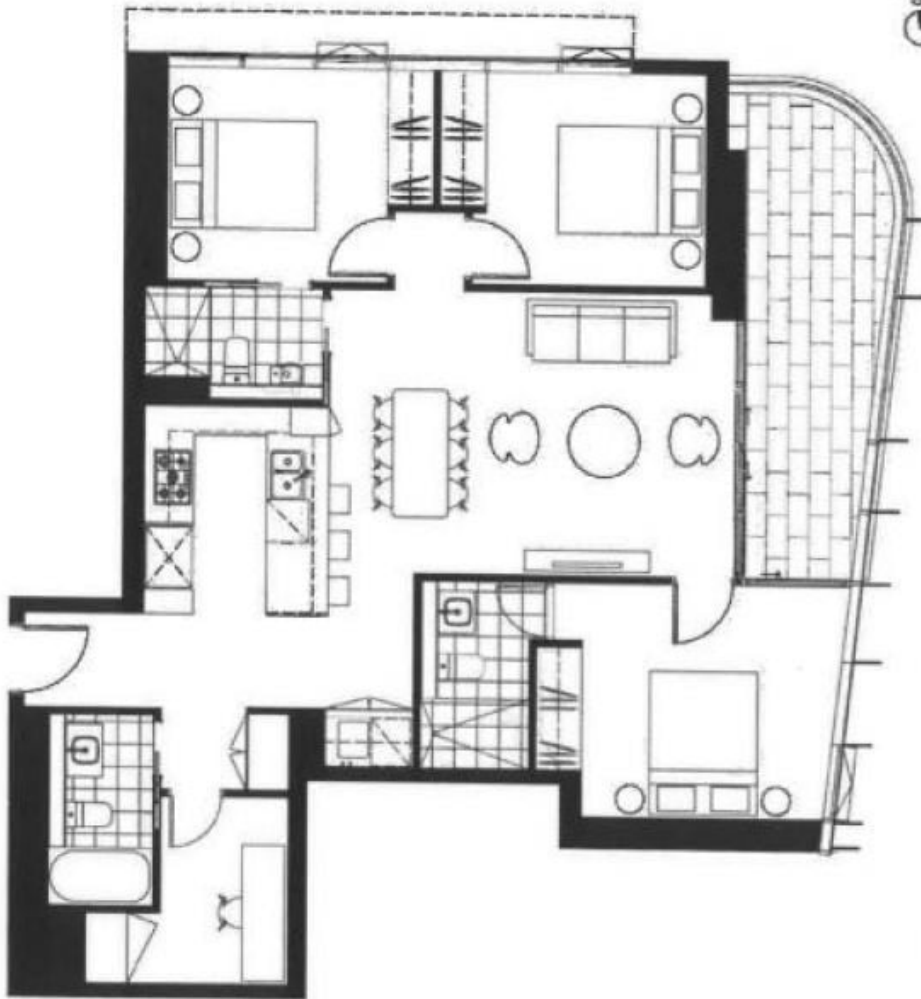
**Penny Jiang**

0406 637 888



**Bow (yuning) Jia**

0424 574 953



151-10-20710

Disclaimer: The information and illustrations in this plan are indicative only and are subject to change. Third Party (other than Bilbergia) shall be held responsible for any errors or omissions in the information and illustrations. Any furniture or appliances depicted are for illustrative purposes only and are not included in the purchase price of the unit. The depicted information and illustrations do not constitute any part of any statement for sale, and the information and illustrations are for illustrative purposes only. The information and illustrations are for illustrative purposes only and are not included in the purchase price of the unit.



Apartment:

E21.06 E22.06 E23.06 E24.06  
 E26.06 E28.06 E27.06 E28.06  
 E29.06 E30.06 E31.06 E32.06  
 E33.06 E34.06

Master Area 1120sqft

Balcony

