

STONE



STONE



STONE



STONE



STONE

9 Sundowner Street Regents Park, QLD

3 

2 

1 

Charming Family Home with Beautiful Gardens and Immaculate Condition

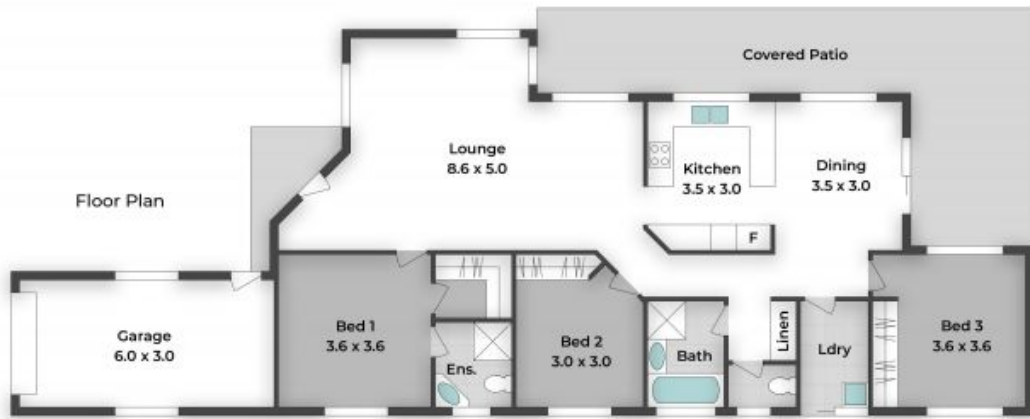
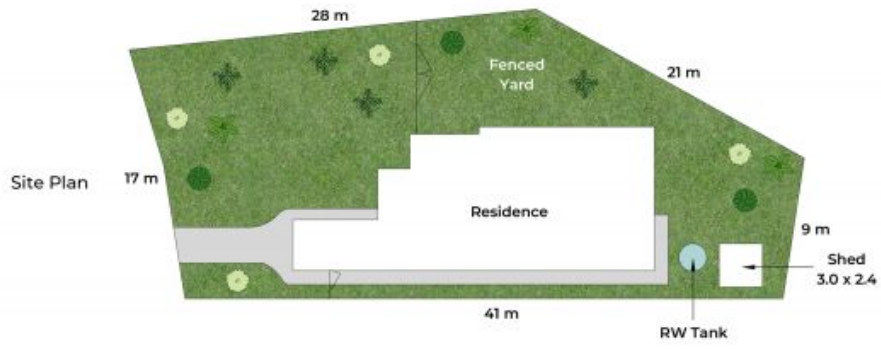
Set on a prime 727m2 allotment, this home makes an incredible first impression with its attractive facade and beautiful gardens. Inside, every detail has been meticulously maintained, ensuring a move-in ready experience.

Price: \$825,000
Council Rates: \$846.16 p/q



Leanne & Bridgette

0413 817 092



Approx. Floor Area | Internal 144 m² | External 38 m² | Total 182 m² | Lot 727 m²

Unless otherwise stated, all dimensions are in metres. Star arrows indicate the upward direction. This plan and information contained within is for illustrative purposes only and not guaranteed to be exact. Interested parties should make their own enquiries.

