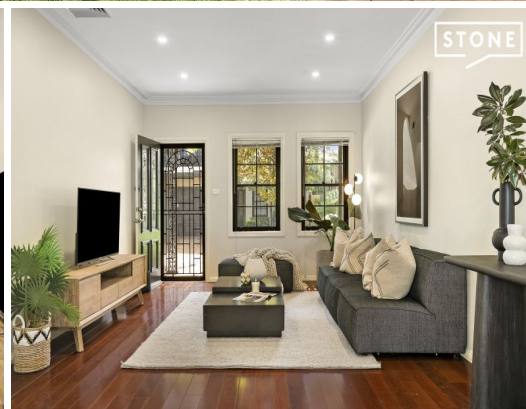


STONE



STONE



STONE



STONE

9A/73A Banksia Street Botany, NSW



### The Prestigious Townhouse in Botany

Quietly nestled within the prestigious 'Somerset Garden Terraces' of Botany, this beautifully presented townhouse offers an idyllic retreat boasting modern style and impressive proportions. Seamlessly blending contemporary finishes with a charming period facade, this family home is peacefully set, recently renovated, and bathed in natural light due to its unattached side and north facing aspect. Surrounded by lush greenery and part of a community-focused complex, it enjoys a tranquil ambiance just moments from Botany Road shops and eateries, Booralee Park, public transport, and top-tier schools.

**Price:** Complex Record  
**Council Rates:** \$344.90 p/q  
**Water Rates:** \$239.00 p/q  
**Strata Rates:** \$888.25 p/q



**Ronald Jusuf**

0404 102 626



**Ivan Gunawan**

0421 032 760



The site plan and floor plan are not to scale; measurements are indicative and in metres. Bushes and trees are placed for illustration purposes. Plans should not be relied on. Interested parties should make and rely on their own enquiries. All other information provided has been collected from reliable sources but cannot be guaranteed for accuracy.

9A/73A Banksia Street  
Botany



Ground Floor



First Floor



Loft



The floor plan is not to scale; measurements are indicative and in metres. All features included in this 3D plan are for inspiration purposes only. This is not an exact replica of the property or the position of exterior elements. Plans should not be relied on. Interested parties should make and rely on their own enquiries.