



16 Greendragon Crescent Upper Coomera, QLD 4 2 2

### Expansive Family Living in Coomera Springs

Welcome to 16 Greendragon Crescent, a wonderfully expansive Coral Homes residence built in 2007 that combines style, space, and comfort. This currently empty and ready for immediate occupation 4-bedroom home with an additional office offers a relaxed family lifestyle in the heart of Coomera Springs. Located within close proximity to premier shopping and dining, parks for recreation, and first-rate schooling options including Coomera Springs Primary School, Assisi Catholic College, and Coomera Anglican College, this home is perfectly positioned for convenience and ease.

**Price:** \$980,000



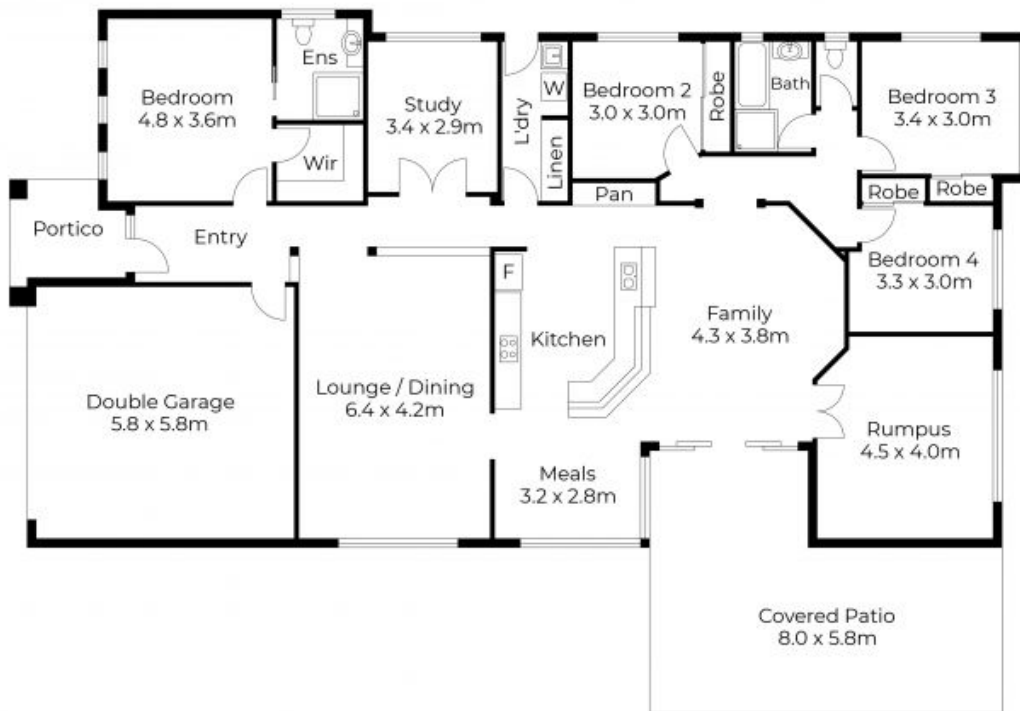
**Shane Evans**

0416 193 663



**Shane Evans**

0416 193 663



Floor plans and site plans are for illustrative purposes only. They are not part of any legal document or title and are subject to errors, omission, and inaccuracies. Whilst every attempt has been made to ensure the accuracy of this plan, measurements of doors, windows, rooms, cupboards etc are approximate only.

APPROXIMATE AREA  
 LIVING AREA : 193m<sup>2</sup>  
 TOTAL AREA : 263m<sup>2</sup>



Floor plans and site plans are for illustrative purposes only. They are not part of any legal document or title and are subject to errors, omission, and inaccuracies. Whilst every attempt has been made to ensure the accuracy of this plan, measurements of doors, windows, rooms, cupboards etc are approximate only.