



115 Shirley Road ROSEVILLE, NSW 4  2  2

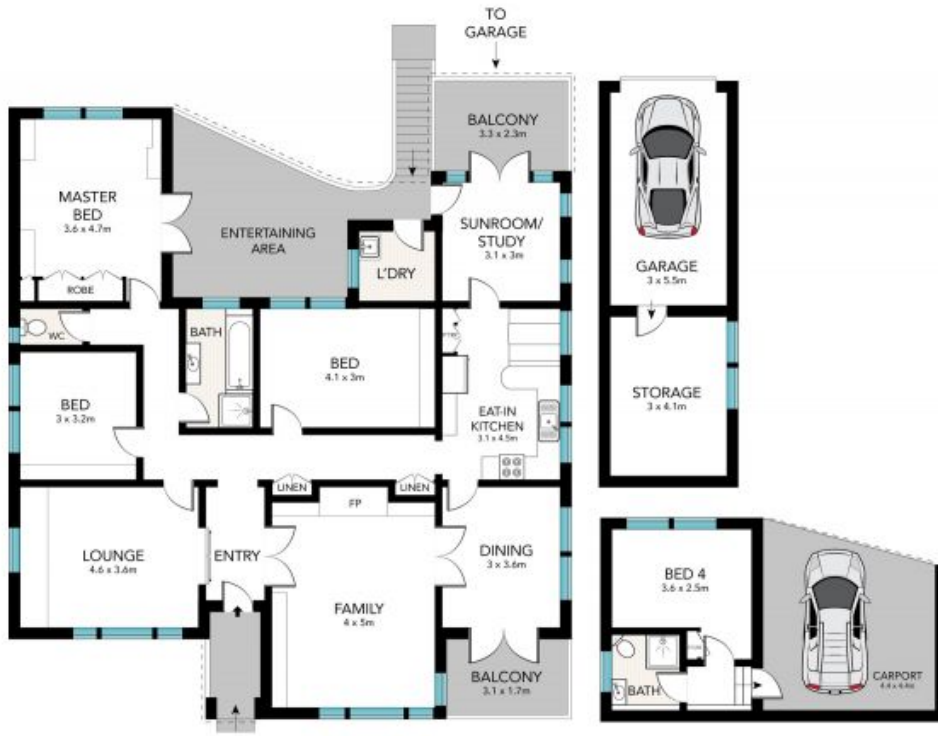
### Endless options

Sitting on a generous 1115sqm block with a northerly rear aspect, this solid brick home presents an opportunity for a family lifestyle set against a tranquil backdrop. Featuring generous interiors, spacious outdoor areas and excellent potential for upgrading and renovating in a sought-after, premier location.

Price: \$1,875,000 - \$2,050,000



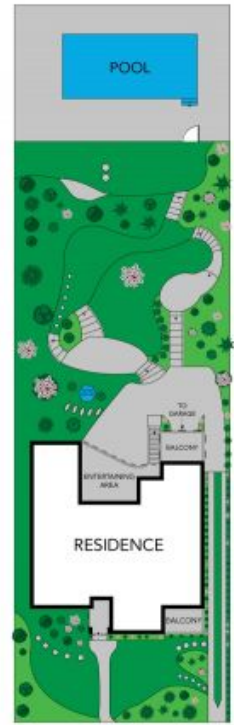
**Jill Henry**  
0416 493 555



GROUND FLOOR



All the information provided has been collected from reliable sources but cannot be guaranteed for accuracy. Interested persons should rely on their own enquiries. All dimensions are approximate and indicative only.



SITE PLAN (NOT TO SCALE)

APPROX. INT: 206 m<sup>2</sup>

115 SHIRLEY ROAD, ROSEVILLE