



2 Niblick Avenue Roseville, NSW

4

2

2

### Golf course envy

Enjoying a sensational cul-de-sac setting backing directly onto Roseville Golf Club, this gracious full brick home is the perfect family find. One of its defining features is its generosity of space with beautifully proportioned rooms providing premier comfort. Timeless and easy care, this sun-filled family home enjoys easy access to transport and schools.

Price:

Sold prior to auction



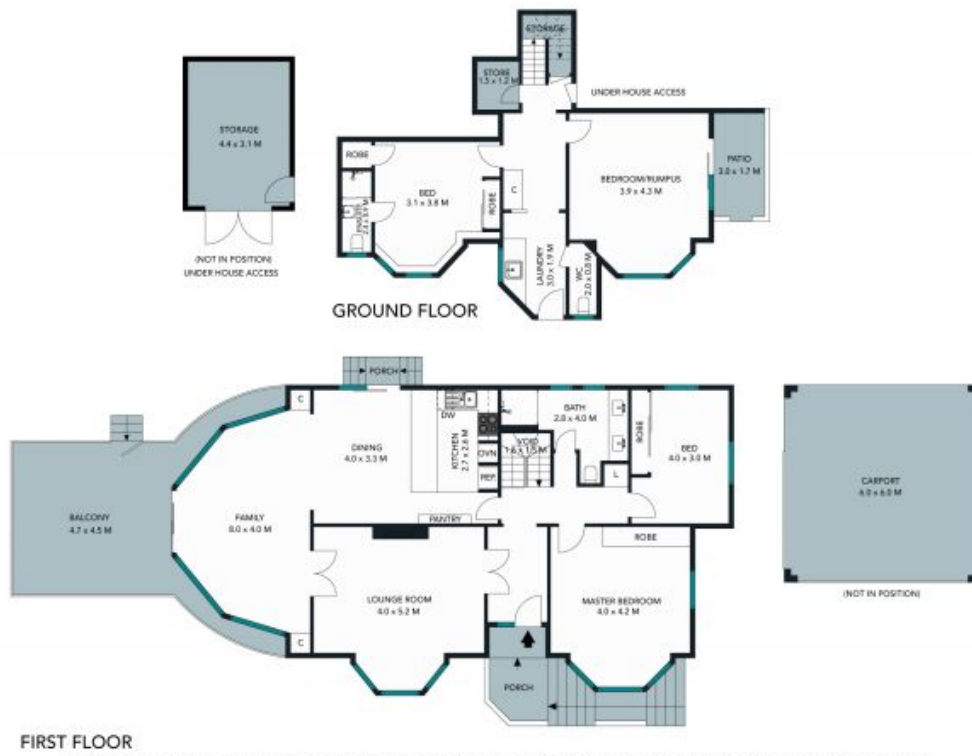
**Jill Henry**

0416 493 555



**Sahil Kotian**

0434 172 588



The floor plan is not to scale; measurements are indicative and in metres. Exterior elements are not in position. Plans should not be relied on. Interested parties should make and rely on their own enquiries.





1ST FLOOR



GROUND FLOOR



The floor plan is not to scale; measurements are indicative and in metres. All features included in this 3D plan are for inspiration purposes only. This is not an exact replica of the property or the position of exterior elements. Plans should not be relied on. Interested parties should make and rely on their own enquiries.

2 Niblick Avenue, Roseville  
stonerealestate.com.au

Produced by DIAKRIT