



11 Werona Avenue Killara, NSW



Exciting opportunity with huge family appeal

Set in a blue-ribbon east-side enclave, this double-brick home features a single level floorplan of light-filled interiors and sundrenched child-friendly garden. Packed with potential, an easy stroll to rail and moments to Lindfield's new shops and cafes, Killara Park and excellent schools, it is your entry ticket into prestigious Killara.

Price:

Sold - contact agent

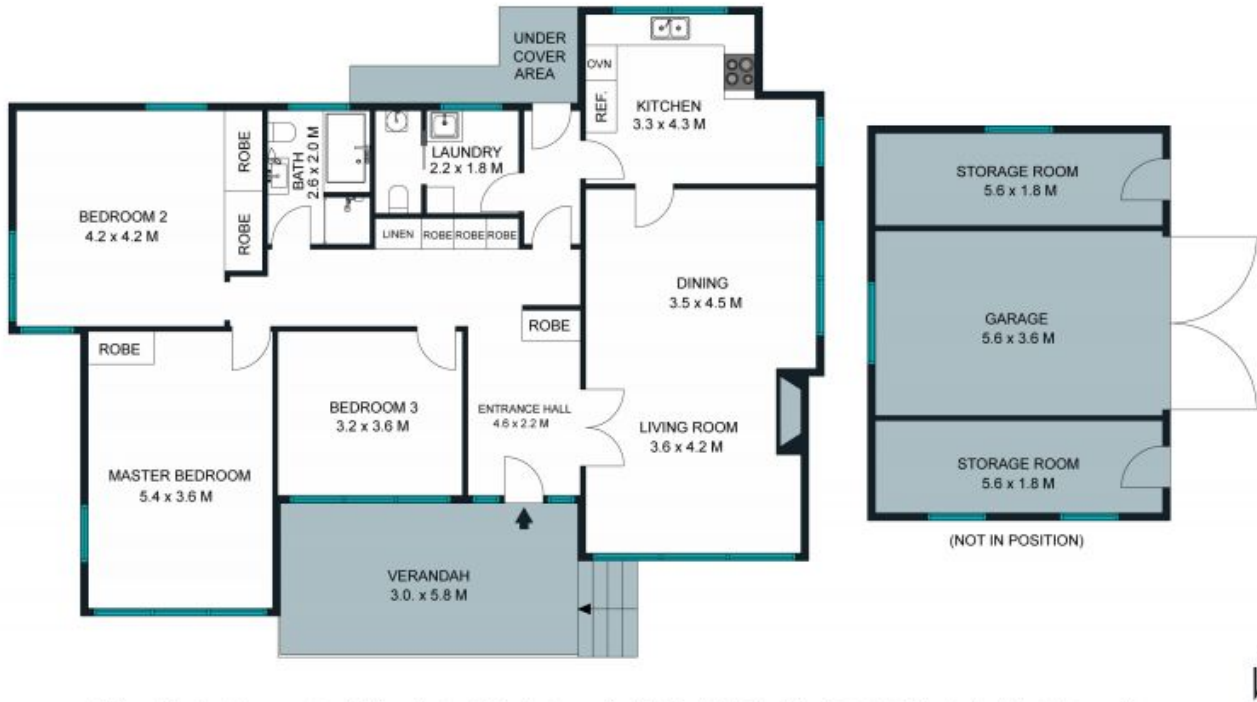


Jill Henry

0416 493 555



Bobby Shi



The floor plan is not to scale; measurements are indicative and in metres. Exterior elements are not in position. Plans should not be relied on. Interested parties should make and rely on their own enquiries.

11 Werona Avenue, Killara
 stonerealestate.com.au

Produced by DIAKRIT



The floor plan is not to scale, measurements are indicative and in metres. All features included in this 3D plan are for inspiration purposes only. This is not an exact replica of the property or the position of exterior elements. Plans should not be relied on. Interested parties should make and rely on their own enquiries.

11 Werona Avenue, Killara
stonerealestate.com.au

Produced by DIAKRIT