

19 Thomas Avenue Roseville, NSW

5

2

2

Classic family haven with exciting potential

Tightly held for nearly 50 years, this tranquil home's sunny updated interiors with period detail and stylish alfresco entertaining combine to offer an inviting light-filled retreat with scope to further enhance and capitalise on its idyllic family-friendly location. Set high side in a peaceful cul-de-sac on a 815sqm north-to-rear parcel, it is a stroll to shops, park and rail.

Price:

Contact Agent



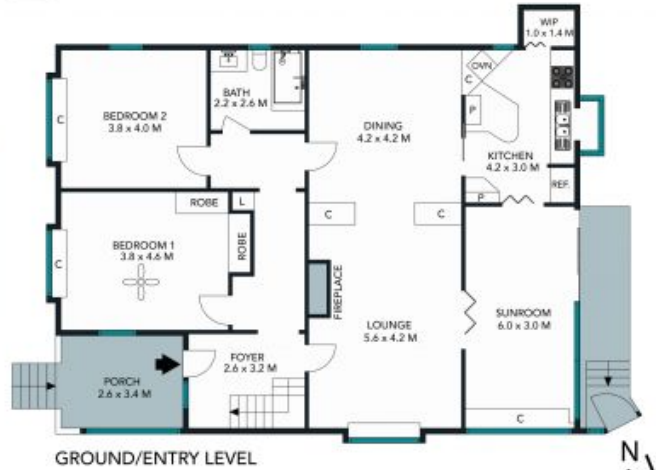
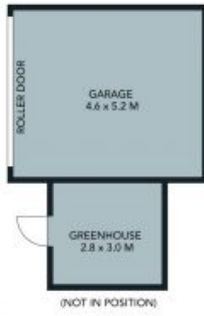
Jill Henry

0416 493 555



Sahil Kotian

0434 172 588



The site plan and floor plan are not to scale; measurements are indicative and in metres. Shading and trees are placed for illustration purposes. Plans should not be relied on. Interested parties should make and rely on their own enquiries.

19 Thomas Avenue, Roseville

STONE



FIRST LEVEL

GROUND/ENTRY LEVEL

The floor plan is not to scale; measurements are indicative and in meters. All features included in this 3D plan are for inspiration purposes only. This is not an exact replica of the property or the position of exterior elements. Plans should not be relied on. Interested parties should make and rely on their own enquiries.

19 Thomas Avenue, Roseville

STONE