



3/19 Findlay Avenue Roseville, NSW

3

2

2

Premier over 55's townhouse a stroll into Roseville village

Wrapped in stunning manicured gardens in a small boutique complex for the over 55s, this tranquil light-filled residence is the perfect solution for downsizing without compromise. Its spacious freshly painted interiors and sundrenched outdoor setting offer a stylish and relaxing lifestyle, moments to Chatswood and footsteps to local village shops, eateries, cinema and rail.

Price:

Contact Agent



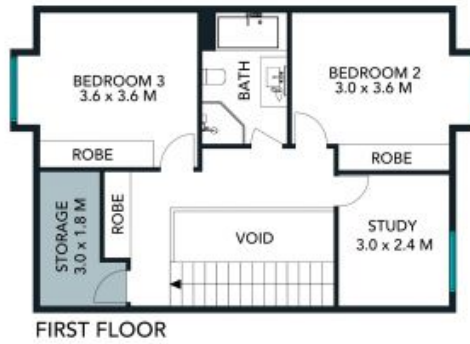
Jill Henry

0416 493 555



Sahil Kotian

0434 172 588



The floor plan is not to scale, measurements are indicative and in metres. Colour statements are not to position. Plans should not be relied on. Interested parties should make and rely on their own enquiries. All other information provided has been collected from reliable sources but cannot be guaranteed for accuracy.



3/19 Findlay Avenue, Roseville





GROUND FLOOR



BASEMENT



FIRST FLOOR

The floor plan is not to scale, measurements are indicative and in metres. All features included in this 3D plan are for inspiration purposes only. This is not an exact replica of the property or the position of exterior elements. Plans should not be relied on. Interested parties should make and rely on their own enquiries.



3/19 Findlay Avenue, Roseville

