



1/10 Victoria Street Roseville, NSW

2 2 1

Total transformation in east side village locale

A complete transformation of this spacious apartment delivers impressive modern living, creating the ideal walk to rail downsizer or first home. Everything is done with high quality throughout. The re-work provides the bonus of a second bathroom and has opened the new kitchen for contemporary convenience. Premier east side village location with footsteps to rail and cafes.

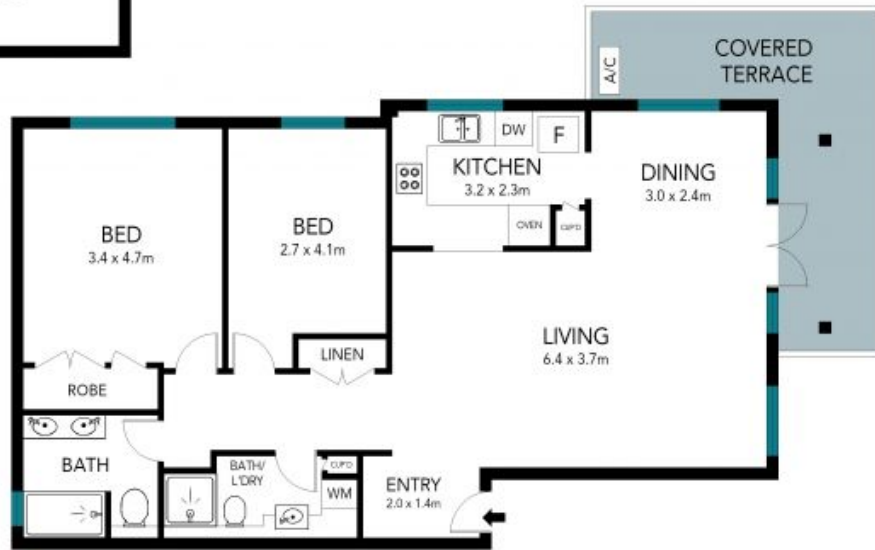
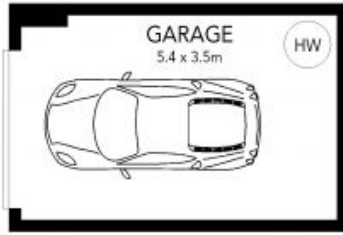
Price: Sold \$1,500,000
Council Rates: \$369.00 p/q
Water Rates: \$153.89 p/q



Jill Henry
 0416 493 555



Sahil Kotian
 0434 172 588



The floor plan is not to scale; measurements are indicative and in metres. Exterior elements are not in position. Plans should not be relied on. Interested parties should make and rely on their own enquiries. All other information provided has been collected from reliable sources but cannot be guaranteed for accuracy.

1/10 Victoria Street, Roseville

