



95 Eton Road Lindfield, NSW

5

2

2

Pristine ready-to-enjoy family entertainer

Immaculate in every detail, this light-filled family entertainer offers comfort and leisure of an exemplary standard. Meticulously maintained, positioned within manicured gardens offering privacy on the high side of the street. Inside hardwood floors span across spacious proportions, providing ample room for families of all ages.

Price:

Contact Agent



Steven Kourdis

0402 555 675



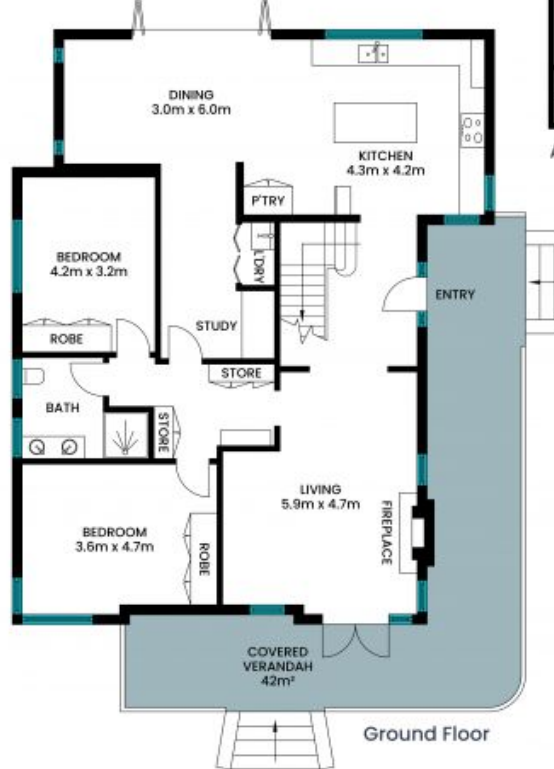
Adette Cao

0433 412 196

95 Eton Road
Lindfield



Site Plan



Ground Floor



First Floor



Internal area: 218m²
Verandah & balcony area: 58m²
Total area: 276m²

The site plan and floor plan are not to scale; measurements are indicative and in metres. Bushes and trees are placed for illustration purposes. Plans should not be relied on. Interested parties should make and rely on their own enquiries. All other information provided has been collected from reliable sources but cannot be guaranteed for accuracy.