

4/19 Norfolk Street The Entrance, NSW

3 2 2

### Serene Lakeside Living

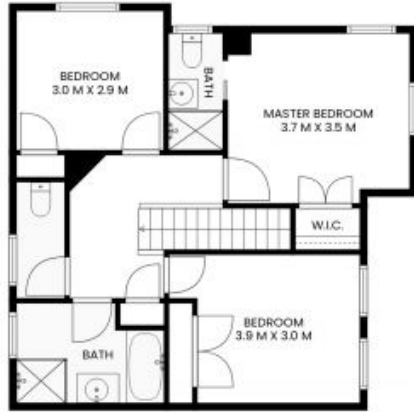
Discover the epitome of serene living in this ultra-private townhouse, perfectly positioned at the rear of a small complex of four. Nestled by the lake, this residence offers a tranquil escape while being just moments away from the vibrant lifestyle the Central Coast has to offer, including pristine beaches, local shops, popular cafes and sought-after restaurants.

Price: \$665,000



**Alyce Lewis**

0423 950 626



FLOOR 2



FLOOR 1

INTERNAL: 99sqm  
EXTERNAL: 40sqm

PLEASE NOTE: These Floorplan + Site Plans have been generated for marketing purposes and are to be used as a guide only. While all care is taken, no guarantee can be given in respect of accuracy; sizes and dimensions are approximate, actual may vary.

