



3/445 Pacific Highway Lindfield, NSW

2

1

1

Lifestyle & Convenience

Elegant charm, stylish updates and a feel good setting at the quiet rear of the block combine to create an idyllic lifestyle for this outstanding apartment. Enjoying level access from the street, it's sun washed and blissfully quiet, showcasing a design with an impressive 122sqm approx on title.

Price: \$1,060,000

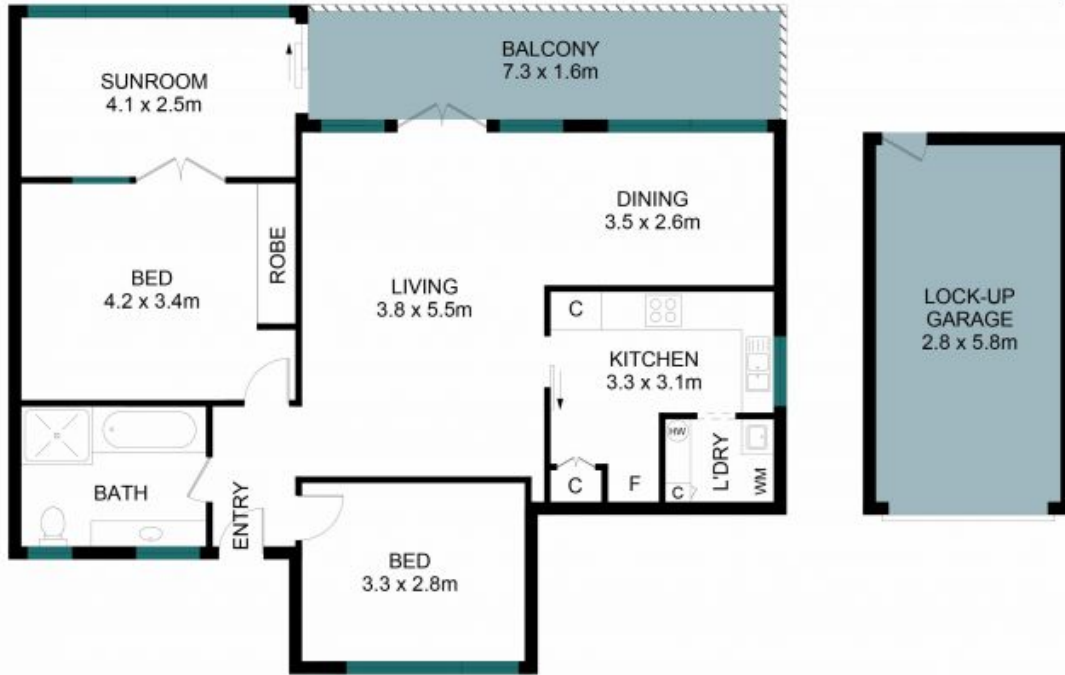


Sahil Kotian

0434 172 588

3/445 Pacific Hwy
Lindfield

STONE



The site plan and floor plan are not to scale; measurements are indicative and in metres. Bushes and trees are placed for illustration purposes. Plans should not be relied on. Interested parties should make and rely on their own enquiries. All other information provided has been collected from reliable sources but cannot be guaranteed for accuracy.