



11/666 Pacific Highway Killara, NSW 3 2 1

### Huge family sized stunner renovated for designer appeal

Find the family-sized space and stunning ready to enjoy contemporary comfort you've been looking for in this fully renovated, strata title, double brick security apartment. Sheltered from the highway the level layout encompasses 153sqm approx. with generous open plan living and dining. Feeling like a private retreat, the sunroom flows to a lushly planted garden. All areas are appointed with abundant storage including three huge bedrooms. The renovated kitchen and two bathrooms, deliver five-star style and functionality. Great to live-in or invest, this stellar apartment is just 700m to rail and in Killara High zone.

**Price:**

Under Contract



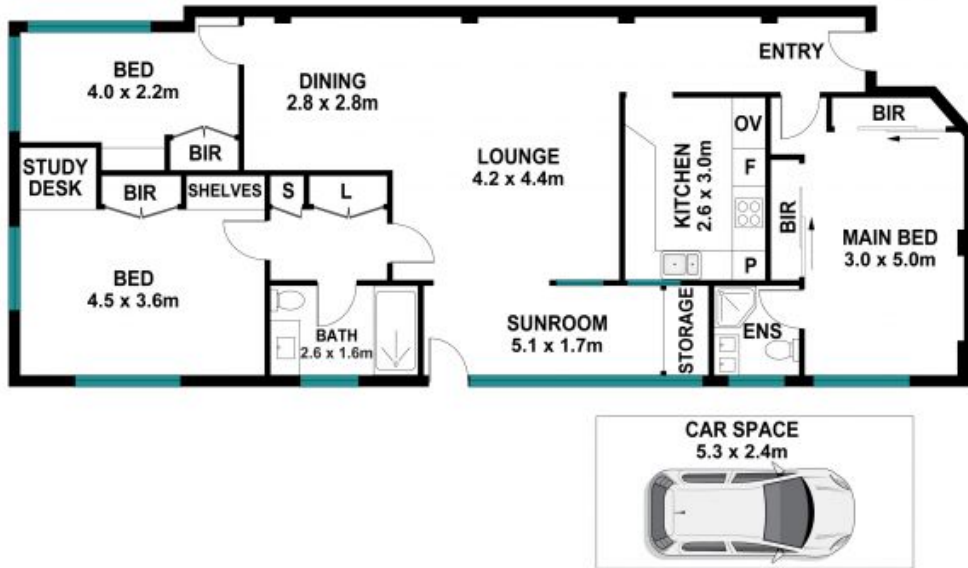
**Ryan Woo**

0410 884 680



**Andrew Braid**

0404 979 597



Internal Living: 113 sqm  
External Living: 13 sqm  
Total Living Area: 126 sqm



The site plan and floor plan are not to scale; measurements are indicative and in metres. Bushes and trees are placed for illustration purposes. Plans should not be relied on. Interested parties should make and rely on their own enquiries. All other information provided has been collected from reliable sources but cannot be guaranteed for accuracy.