



23 Manra Way Pacific Pines, QLD

4

3

4

Elevated with panoramic views...

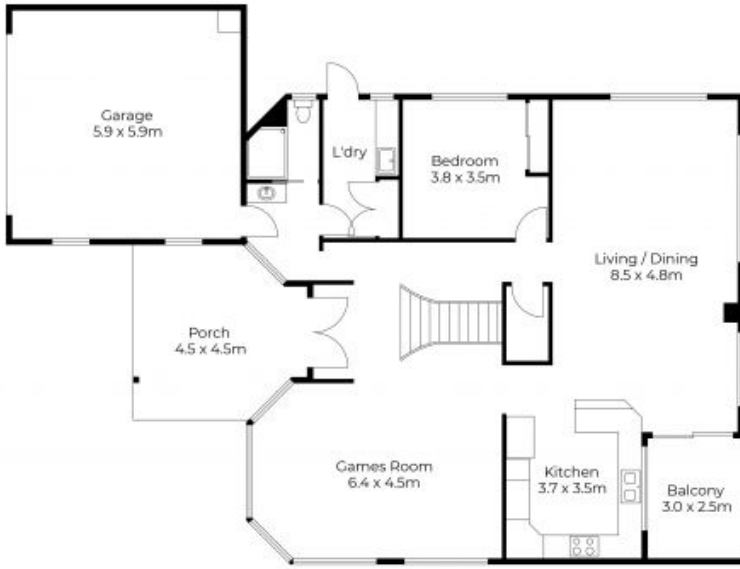
Wonderfully elevated with panoramic valley views of the setting sun and located near the pinnacle of Pacific Pines, this home is a delightful example of contemporary design, complemented by gentle summer breezes and a perfect aspect.

Price: \$1,270,000

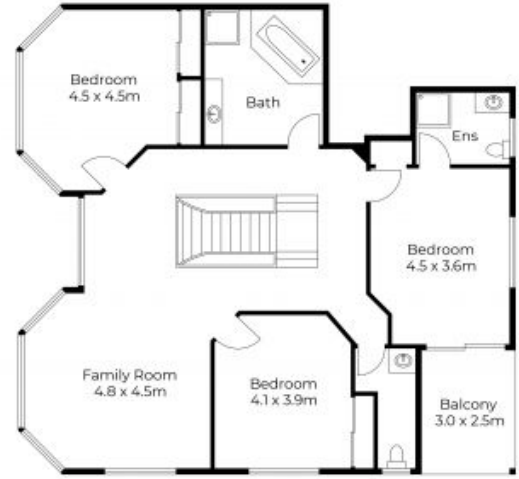


Shane Evans

0416 193 663



Ground Floor



First Floor



Floor plans and site plans are for illustrative purposes only. They are not part of any legal document or title and are subject to errors, omission, and inaccuracies. Whilst every attempt has been made to ensure the accuracy of this plan, measurements of doors, windows, rooms, cupboards etc are approximate only.

APPROXIMATE AREA
 LIVING AREA : 288m²
 TOTAL AREA : 321m²