



6/4-6 Park Avenue Waitara, NSW

2 2 1

Sold by Adam Noakes and Angel Li 0450 753 26

Sold by Adam Noakes and Angel Li 0450 753 26

Nestled in the heart of Waitara, this contemporary apartment, situated on level 1, offers a blend of comfort and convenience. Stepping inside, you're greeted by a combined living and dining area that flows seamlessly onto a spacious, north-facing balcony ? ideal for soaking up natural sunlight and enjoying the serene views. The open-plan kitchen boasts a sleek stone benchtop, high-quality finishes, and modern appliances, including a dishwasher, rangehood, and gas cooktop, making it perfect for both everyday meals and entertaining.

Price:

Sold by Adam Noakes and Angel Li 0450 753 268



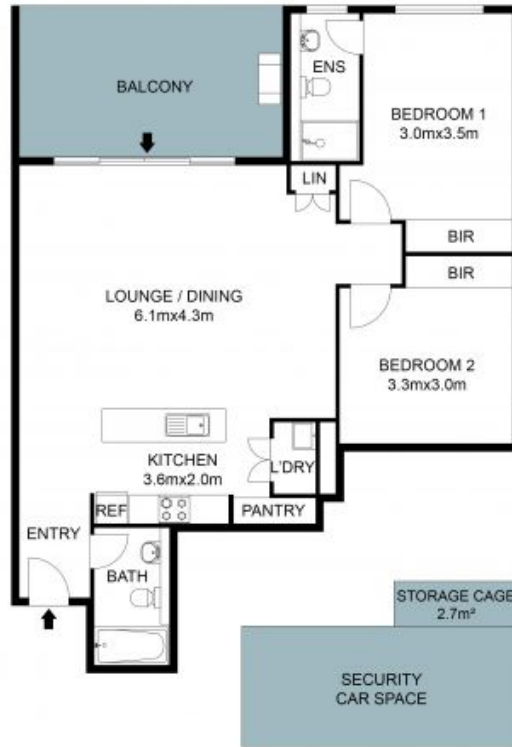
Adam Noakes

0450 753 268



Angel (Qinghua) Li

0452 532 578



Floor Plan

The Floor plan is not to scale; measurements are indicative and in metres. Plans should not be relied on. Interested parties should make and rely on their own enquiries. All other information provided has been collected from reliable sources but cannot be guaranteed for accuracy.