



16 Maize Avenue Spring Farm, NSW

4 2 2

Luxury family home

Discover this beautifully crafted single-storey home by Edgewater Homes designed to offer both comfort and luxury in every detail. Situated in the desirable Spring Farm area, this property is located with view of the tranquil Stubby Tree Display Reserve, adding natural beauty to your everyday views.

Price: \$1,120,000



Chris York

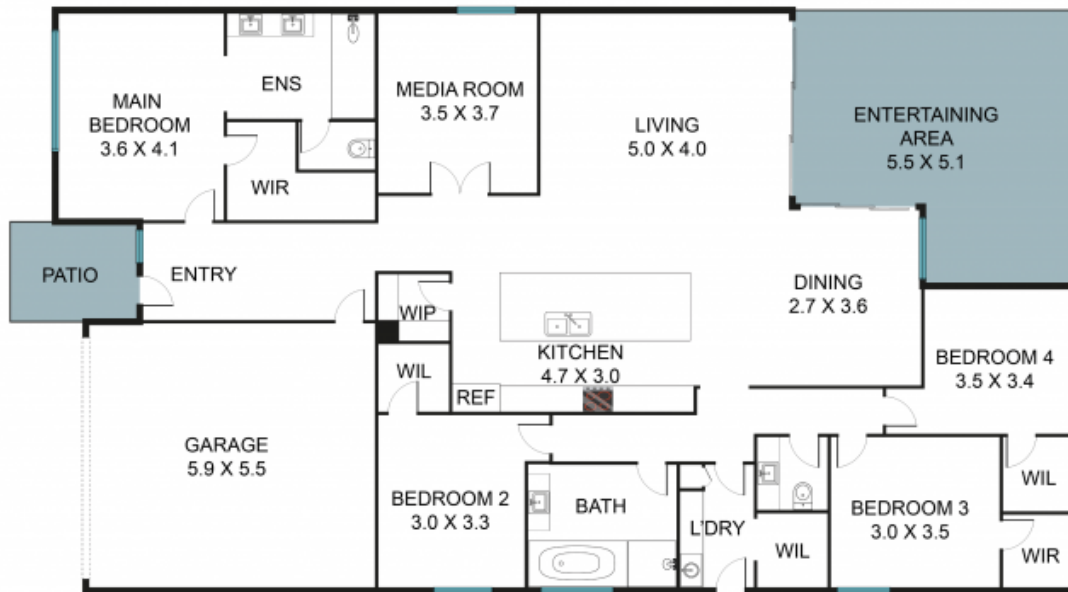
0405 434 414



Adriana Hayek

0421 162 855

STONE



16 Maize Ave, Spring Farm NSW 2570



The floor plan is not to scale, measurements and in metres. Exterior elements are not in position.
Plans should not be relied on. Interested parties should make and rely on their own enquiries.
All other information provided has been collected from reliable sources but cannot be guaranteed for accuracy.