



105 Sandfly Road Margate, TAS

4 1 9

STYLISH QUALITY LIFESTYLE

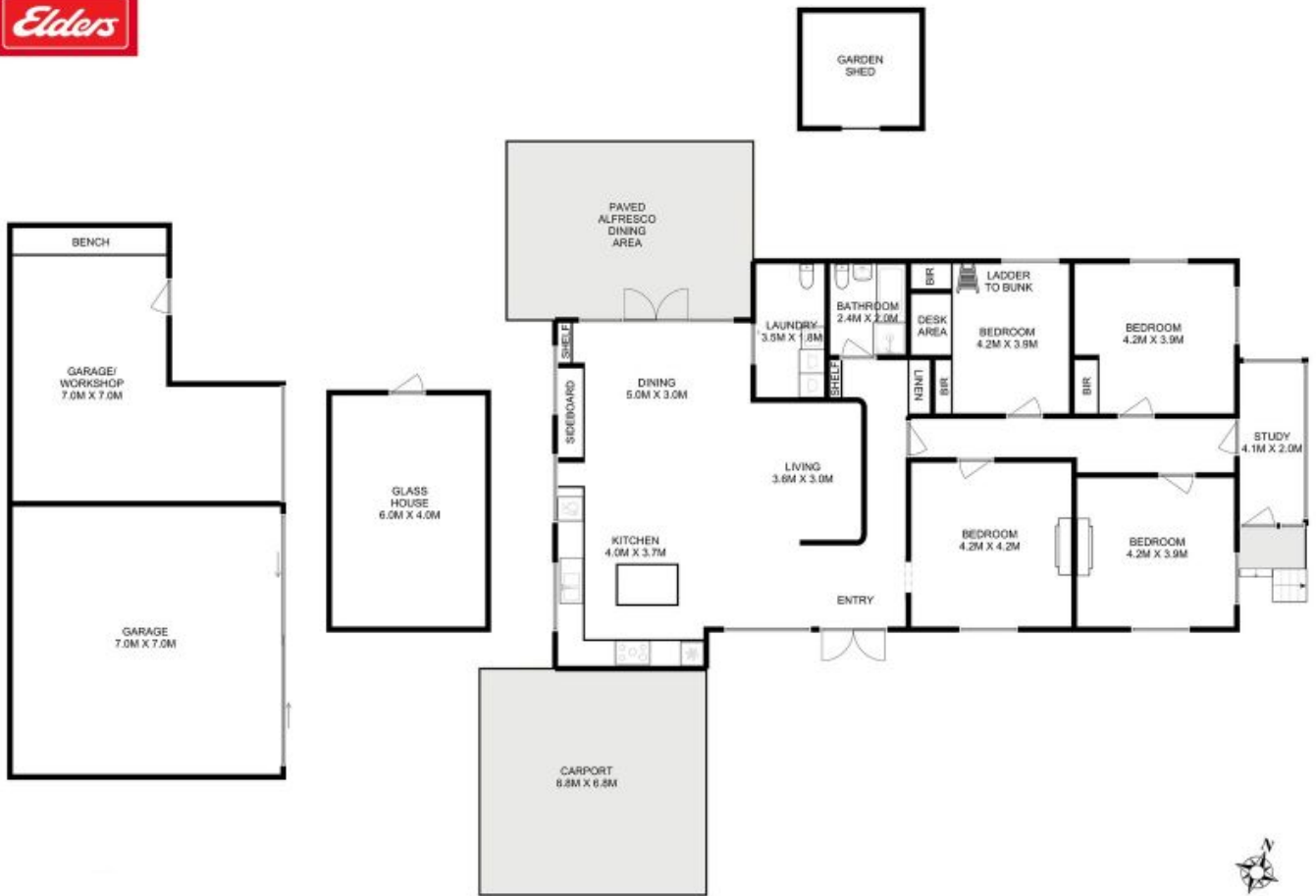
A fine example of an early 20th century rural family home featuring fine detailing. This historical home has been carefully restored and offers the new owner a relaxing, rural lifestyle on 3946 sqm, all within 20 minutes drive to Hobart.

Price: Offers Over \$695,000



Wendy Wade

0418 561 538



Total Approx. Floor Area (inc. Carport) : 208 sqm
Total Approx. Outbuilding Area : 122 sqm

All measurements are internal and approximate.
This plan is a sketch for illustration, not valuation.
Produced by Open2view.com

