



148 Umfrevilles Road Kaoota, TAS



SLEEPING BEAUTY

This unique property is set on a secluded parcel of 11 hectares (approx.) of partially cleared and partially forested land sloping gently towards Fogarty Creek views of surrounding hills and bushland. Sitting undisturbed for some years the house and surrounding land offer much to be explored.

Price:

Low to Mid \$500,000s



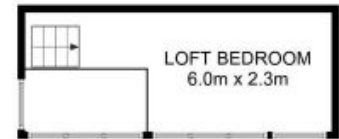
Wendy Wade

0418 561 538



Wendy Wade

0418 561 538



Total Approx. Floor Area : 65 sqm



All measurements are internal and approximate.
 This plan is a sketch for illustration, not valuation.
 Produced by Open²view.com