



174 Middle Road Pelverata, TAS



EVERYTHING YOU COULD HOPE FOR!

This spectacular home is located in the ever-popular area of Pelverata where just down the road you'll find popular walking tracks to take you to the stunning Pelverata Falls, and several other gorgeous walks in the area. Just 35 minutes from the Hobart CBD, and only a short 15 minutes out of the main street of Huonville or 20 minutes to Kingston, you are so close to everything, yet you will feel miles away from all the hustle and bustle!

Price:

Offers Over \$750,000



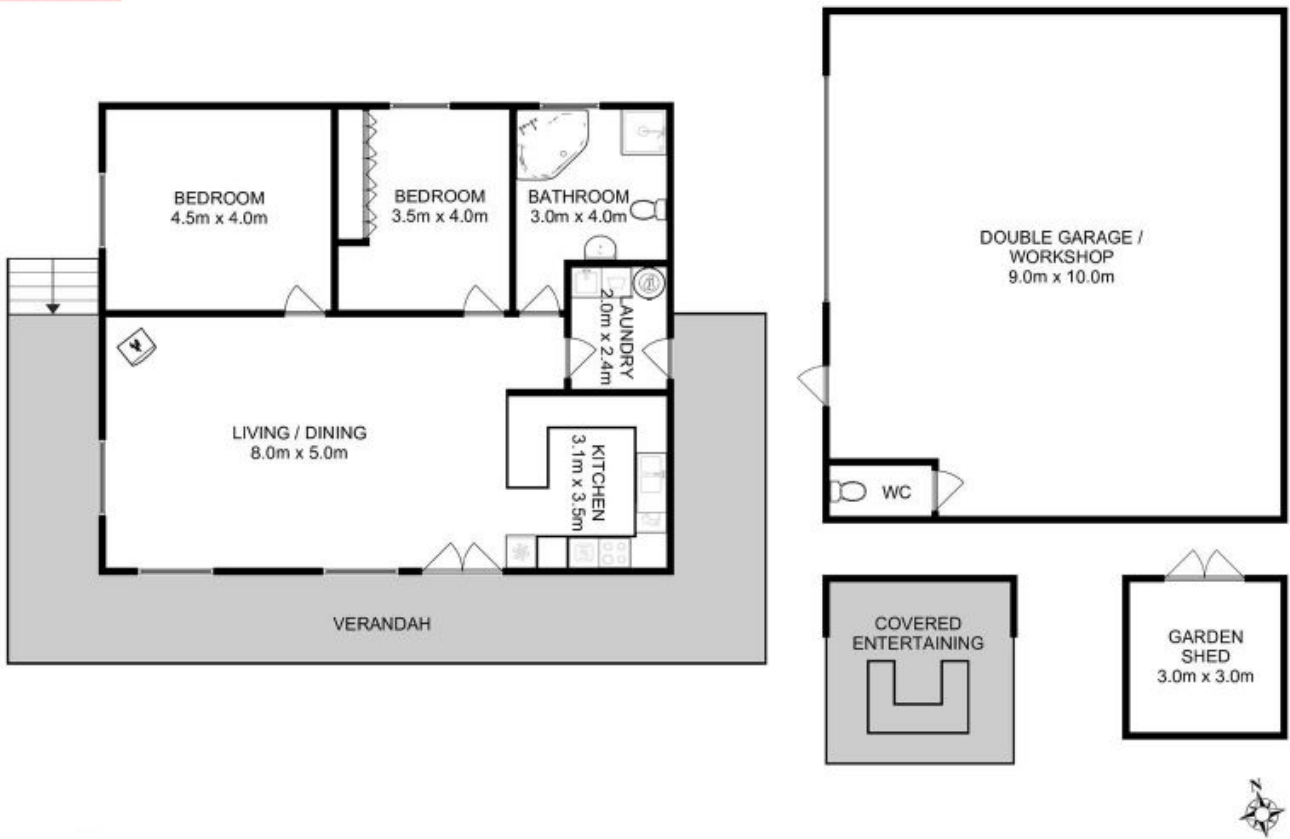
Wendy Wade

0418 561 538



Wendy Wade

0418 561 538



Total Approx. Floor Area : 109 sqm
Total Approx. Outbuilding Area : 99 sqm

All measurements are internal and approximate.
This plan is a sketch for illustration, not valuation.
Produced by Open2view.com