

37 Hollyhock Drive Kingston, TAS

4 1 2 2

CLEVER ARCHITECTURE

This inviting family home in the popular Whitewater Park Estate was built in 2020 and has been architecturally designed to achieve high thermal efficiency with a northerly aspect to maximise the winter sun.

Price: Offers over \$895,000



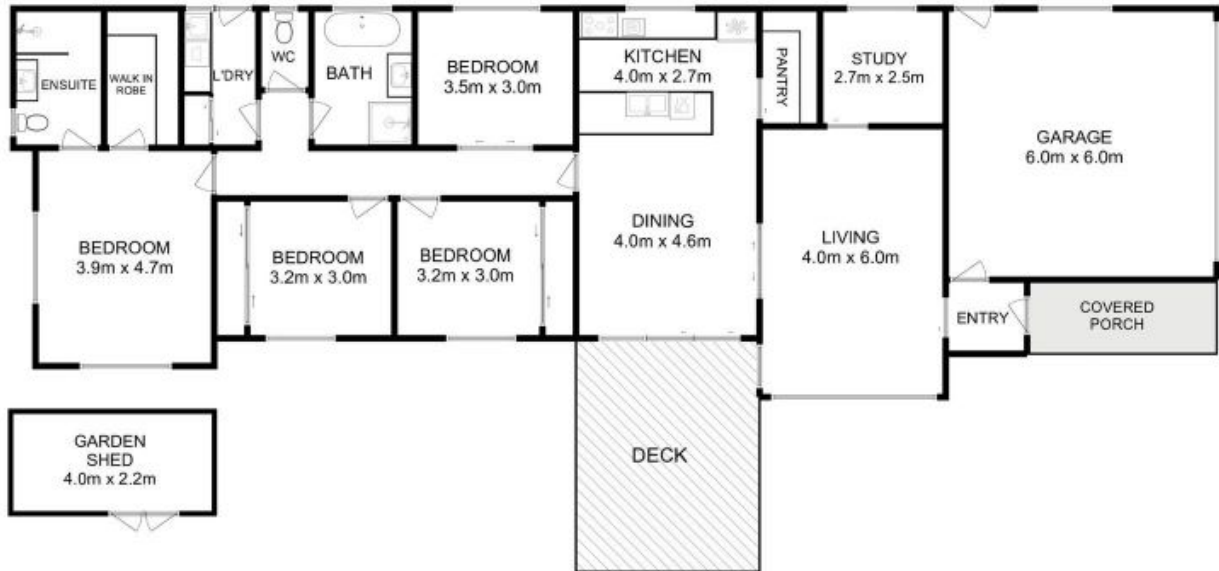
Wendy Wade

0418 561 538



Wendy Wade

0418 561 538



Total Approx. Floor Area (Including Garage) : 210 sqm
Total Approx. Outbuilding Area : 9.9 sqm

All measurements are internal and approximate.
This plan is a sketch for illustration, not valuation.
Produced by Open2view.com