



279 Kelletts Road Sloping Main, TAS

3

1

4

Your Very Own Bush Retreat

Set amongst 50 acres of land with amazing views to Slopen Island and beyond, this 3 bedroom family sized home will suit those looking for peace and tranquility.

The home has been freshly painted throughout inclusive of new carpet, window furnishings and the existing floor boards have been sanded and polished.

The rustic kitchen includes a wood fired stove, timber benchtops and flows into the living and dining areas.

Off the living area is a separate room, which could be utilised as a formal living room or rumpus, where you could sit and enjoy the amazing views of Slopen Island and beyond.

Walk out onto the deck and not only be mesmerised by the water views but by the peace the surrounding settings offer whilst entertaining your guests.

The large bathroom offers a huge shower and a deep corner bath with both toilet and laundry being separate.

Upstairs you will find three very generous size bedrooms with plenty of space for an ensuite (STCA).

Price:

Offers Over 499,000



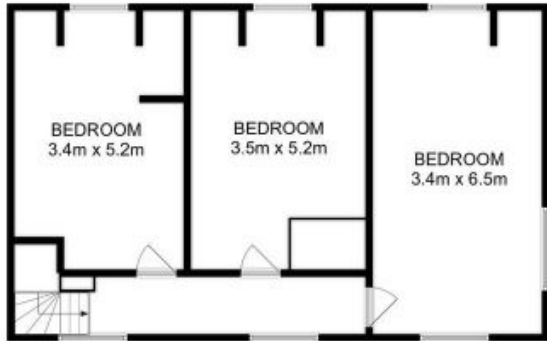
Louise Wallace

0429 671 462

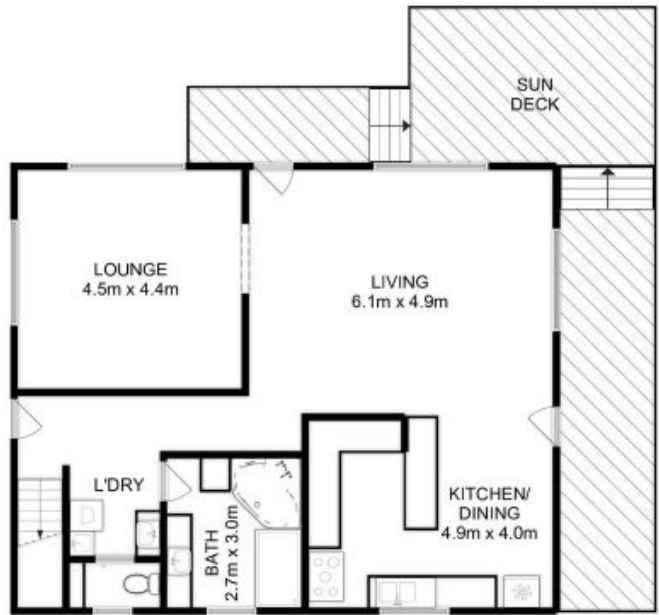


Louise Wallace

0429 671 462



UPPER LEVEL



LOWER LEVEL



Total Approx. Floor Area : 173 sqm
Total Approx. Outbuilding Area : 18 sqm

All measurements are internal and approximate.
This plan is a sketch for illustration, not valuation.
Produced by Open2view.com