



3468 Channel Highway Woodbridge, TAS



### WRITE THE NEXT CHAPTER IN THIS CHURCH'S STORY

Price: Offers Over \$320,000

This charming 1885 church, nestled in the heart of Woodbridge Village, offers a unique opportunity for the right astute buyer.



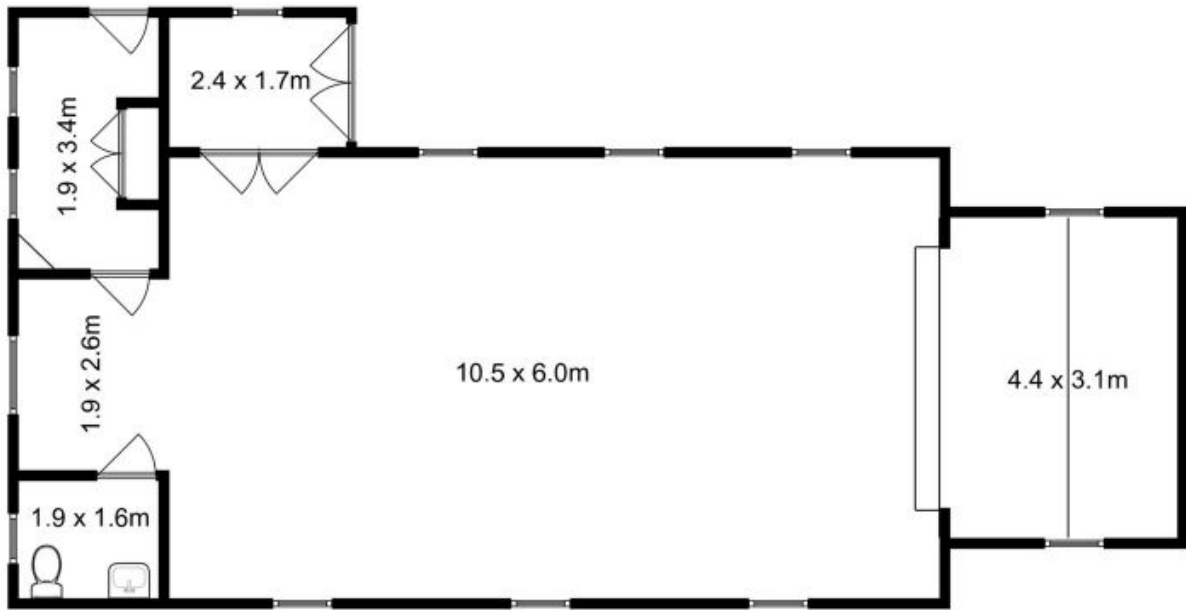
Wendy Wade

0418 561 538



Wendy Wade

0418 561 538



Total Approx. Floor Area : 104 sqm

All measurements are internal and approximate.  
This plan is a sketch for illustration, not valuation.  
Produced by Open2view.com