



5/6 Peverell Street Hillcrest, QLD

3

1

1

### Welcoming Townhouse in a Peaceful, Friendly Complex

Tucked away in a small, beautifully maintained complex, this charming townhouse offers a blend of comfort, space, and a welcoming community. With just nine units, mostly owner-occupied, you'll enjoy a sense of belonging while still preserving your privacy.

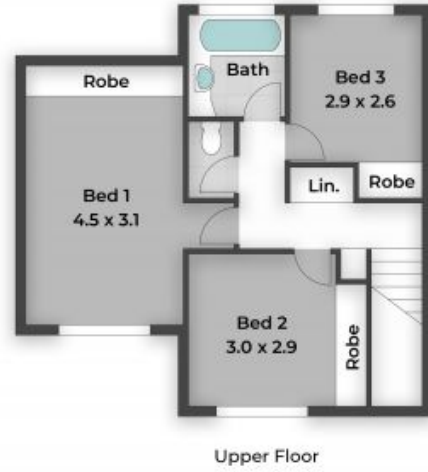
Price:

CONTACT AGENT



**Leanne & Bridgette**

0413 817 092



Approx. Floor Area | Internal 120 m<sup>2</sup> | External (Covered) 12 m<sup>2</sup> | Total 132 m<sup>2</sup>

Unless otherwise stated, all dimensions are in metres. Star arrows indicate the upward direction. This plan and information contained within is for illustrative purposes only and not guaranteed to be exact. Interested parties should make their own enquiries.

