

210 Betula Avenue Mill Park, VIC

3 2 1

### Brand new, bold and beautiful!

This luxury apartment is in Mill Park's newest and finest townhouse complex and is ready for you to move into straight away! Perfect for the modern family, professional couples WFH and multi-generational living with a bedroom and powder room on the ground floor, open plan kitchen living and meals on the 1st floor and 2 bedrooms on the 2nd floor serviced by 2 bathrooms.

**Price:** \$525 pw  
**Available Date:** 23/12/2024



**Jessica Conte-Singh**

0400 134 550



**Caitlin Groat**

0455 332 296

5/328-338 McKimmies Road  
Mill Park

STONE



2nd Floor



1st Floor



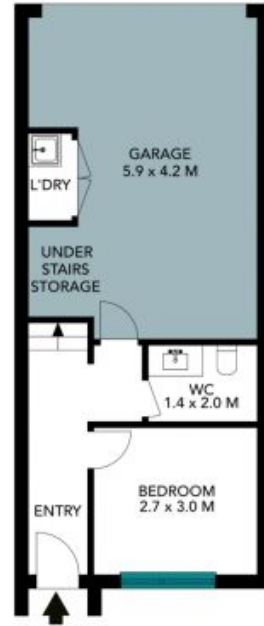
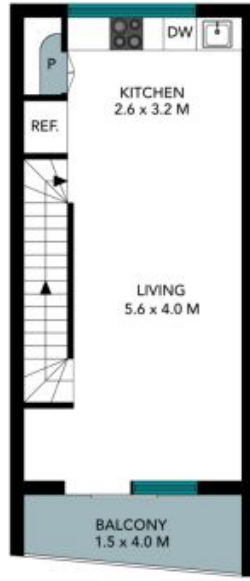
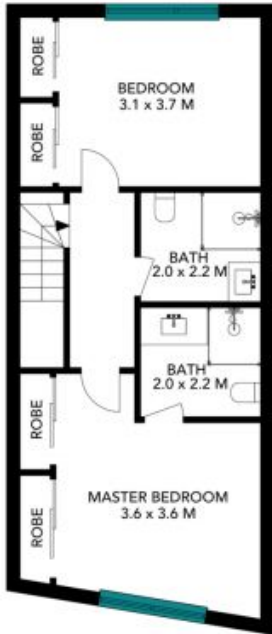
Ground Floor



The floor plan is not to scale; measurements are indicative and in metres. All features included in this 3D plan are for inspiration purposes only. This is not an exact replica of the property or the position of exterior elements. Plans should not be relied on. Interested parties should make and rely on their own enquiries.

5/328-338 McKimmies Road  
Mill Park

STONE



The floor plan is not to scale, measurements are indicative and in metres. Exterior elements are not in position. Plans should not be relied on. Interested parties should make and rely on their own enquiries. All other information provided has been collected from reliable sources but cannot be guaranteed for accuracy.