

Actual View

128 Hannah Street Beecroft, NSW

3

1

2

### Renovate or Detonate in Beecroft Primary and Cheltenham Girls High zones

Ripe for a transformation, this classic residence presents an enticing blank canvas on a generous 708.2sqm corner block with a desirable north-to-rear aspect. An invitation to craft a prized family home of accessibility and possibility with sweeping views of the city skyline (STCA), it's located in the sought-after Beecroft Public, Cheltenham Girls and Carlingford High school catchments.

**Price:** Contact Agent  
**Council Rates:** \$565.90 p/q  
**Water Rates:** \$172.79 p/q



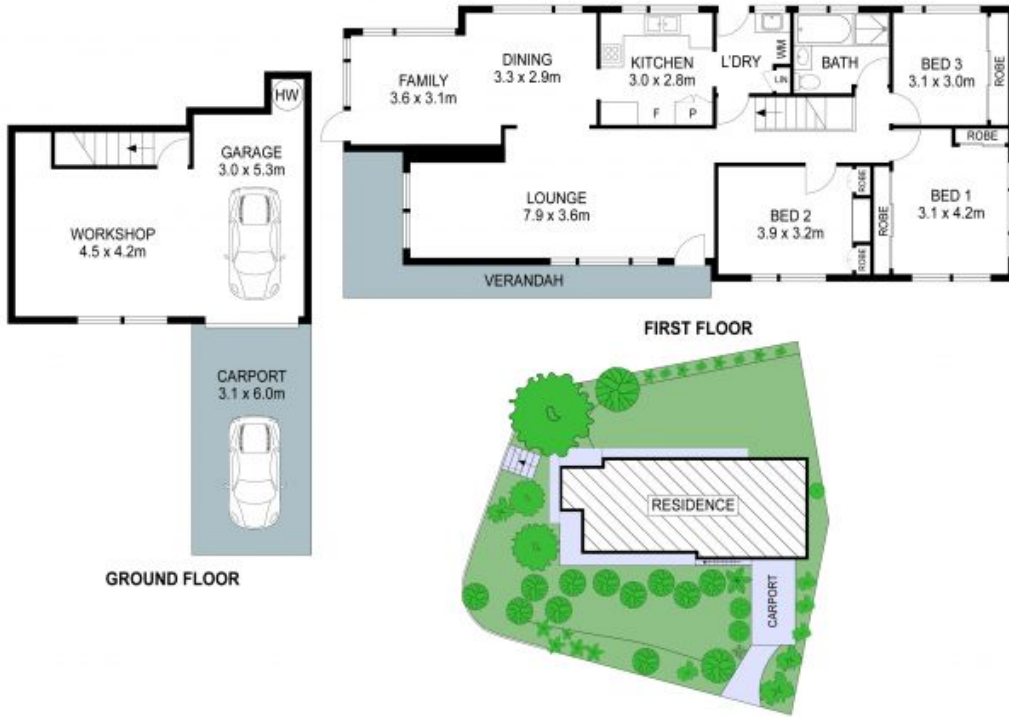
**Kevin Dearlove**

0403 338 302

# 128 Hannah Street, Beecroft

STONE

3 Beds 1 Bath 2 Cars 708.2m<sup>2</sup>



THIS IS AN ARTIST'S IMPRESSION - ALL DIMENSIONS, LAYOUTS AND TREES ARE APPROXIMATE  
ALL INTERESTED PARTIES SHOULD MAKE AND RELY ON THEIR OWN ENQUIRIES

