



29 Churchill Road Taroom, TAS

3 2

### BREATHTAKING WATER VIEWS

This classic 1950s' two-storey home offers truly breathtaking water views stretching from South Arm to Bruny Island.

**Price:** Offers Over \$845,000

**Council Rates:** \$620.00 p/q



**Wendy Wade**

0418 561 538



**Wendy Wade**

0418 561 538



29 Churchill Road,  
Taroona, TAS

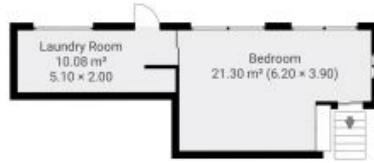
CREATED ON  
2024-11-17

LOCATION  
29 Churchill Rd  
7055 Taroona  
TAS  
Australia

DETAILS  
Total area: 173.81 m<sup>2</sup>  
Living area: 142.21 m<sup>2</sup>

▼ Ground Floor

TOTAL AREA: 31.36 m<sup>2</sup> - LIVING AREA: 31.36 m<sup>2</sup>



▼ 1st Floor

TOTAL AREA: 142.45 m<sup>2</sup> - LIVING AREA: 110.65 m<sup>2</sup>



THIS FLOORPLAN IS PROVIDED WITHOUT  
WARRANTY OF ANY KIND. GROUNDUP IMAGING  
DISCLAIMS ANY WARRANTIES INCLUDING,  
WITHOUT LIMITATION, ANY DIRECT OR INDIRECT  
OR ACCURACY OF DIMENSIONS.