

107 Corinth Road Heathcote, NSW



Luxury family living and spacious entertaining

This spacious entertainer offers the versatility of multiple living areas, including a large main lounge room with beautiful natural light and bush views. The open plan kitchen and dining opens seamlessly onto an expansive entertaining deck with an outdoor kitchen, bar fridge, pizza oven and four-person spa. Conveniently located close to local schools, transport and shops, it's relaxed, modern living at its finest.

Price: \$1,505,000

Council Rates: \$471.11 p/q

Water Rates: \$172.79 p/q



Gerard Foote

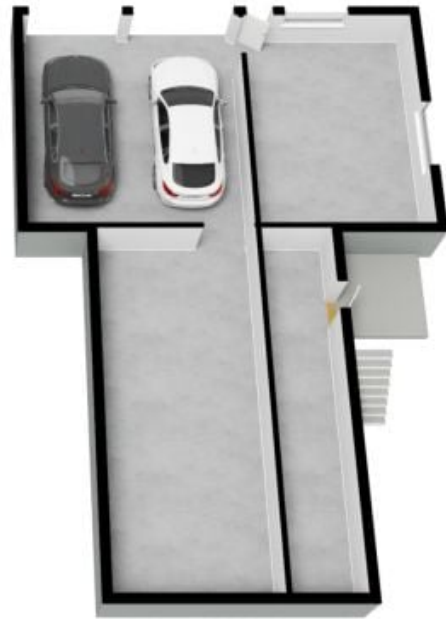
0433 421 333

107 Corinth Road
Heathcote

STONE



FIRST FLOOR



GROUND FLOOR



The floor plan is not to scale; measurements are indicative and in metres. All features included in this 3D plan are for inspiration purposes only. This is not an exact replica of the property or the position of exterior elements. Plans should not be relied on. Interested parties should make and rely on their own enquiries.